

# ANNEXES

<b>1</b>	<b>A.0 COUNTRY LIST</b>	<b>5</b>
	Tabel A.0.1 Country list	5
<b>2</b>	<b>A.0.2 REGIME TYPE</b>	<b>1</b>
	Tabel A.0.2 Data from 1980-2014 unless otherwise noted – the avg. change is in absolute values	1
<b>3</b>	<b>A.0.3 DATA COVERAGE</b>	<b>6</b>
<b>4</b>	<b>A.1 GRANGER CAUSALITY TESTS</b>	<b>9</b>
	Table A.1.1: Causality from freedom and participation rights to growth	10
	Table A.1.1.1: Causality from freedom of religion to growth	11
	Table A.1.1.2: Causality from freedom of speech to growth	11
	Table A.1.1.3: Causality from freedom of domestic movement to growth	12
	Table A.1.1.4: Causality from freedom of foreign movement to growth	12
	Table A.1.1.5: Causality from freedom of assembly and association to growth	13
	Table A.1.1.6: Causality from electoral self-determination to growth	13
	Table A.1.1.7: Causality from worker rights to growth	14
	Table A.1.2: Causality from growth to freedom and participation rights	14
	Table A.1.2.1: Causality from growth to freedom of religion	15
	Table A.1.2.2: Causality from growth to freedom of speech	15
	Table A.1.2.3: Causality from growth to freedom of domestic movement	16
	Table A.1.2.4: Causality from growth to freedom of foreign movement	16
	Table A.1.2.5: Causality from growth to freedom of assembly and association	17
	Table A.1.2.6: Causality from growth to electoral self-determination	17
	Table A.1.1.7: Causality from growth to worker rights	18
<b>5</b>	<b>A.2. GLOBAL ANALYSIS</b>	<b>18</b>
	Table A.2.1: The effect of civil liberties on GDP per capita growth	19
	Table A.2.2: The effect of political rights on GDP per capita growth	19
	Table A.2.3: The effect of freedom and participation rights on GDP per capita growth adding covariates (5 lags)	21
	Table A.2.4: The effect of freedom and participation rights on GDP per capita growth adding covariates (15 lags)	23
	Table A.2.5: The effect of freedom and participation rights on GDP per capita growth adding covariates using fixed sample (Within estimates, 10 lags)	25
	Table A.2.6: The effect of freedom and participation rights on GDP per capita growth adding covariates using fixed sample (GMM estimates, 10 lags)	26
	Table A.2.7: The effect of freedom and participation rights on GDP per capita growth adding covariates using fixed sample (Within estimates, 15 lags)	27
	Table A.2.8: The effect of freedom and participation rights on GDP per capita growth adding covariates using fixed sample (GMM, 15 lags)	28

Table A.2.9: The effect of the sub-indicators on GDP per capita growth (GMM estimates)	29
Table A.2.10: The effect of the sub-indicators on GDP per capita growth (5 Lags)	30
Table A.2.11: The effect of the sub-indicators on GDP per capita growth (15 Lags)	31
Table A.2.12: Causality from freedom and participation rights to Investment	31
Table A.2.13: Causality from investment to freedom and participation rights	32
Table A.2.14: Causality from freedom and participation rights to trade	32
Table A.2.15: Causality from trade to freedom and participation rights	33
Table A.2.16: The effect of freedom and participation rights on investment	33
Table A.2.17: The effect of freedom and participation rights on investment adding regime type and GDP per capita	34
Table A.2.18: The effect of freedom and participation rights on trade	34
Table A.2.19: The effect of freedom and participation rights on trade adding regime type and GDP per capita	35
Table A.2.20: Causality from freedom and participation rights to government effectiveness	35
Table A.2.21: Causality from government effectiveness to freedom and participation rights	36
Table A.2.22: Causality from freedom and participation rights to control of corruption	36
Table A.2.23: Causality from control of corruption to freedom and participation rights	37
Table A.2.24: The effect of freedom and participation rights on government effectiveness	37
Table A.2.25: The effect of freedom and participation rights on government effectiveness adding regime type and GDP per capita	38
Table A.2.26: The effect of freedom and participation rights on control of corruption	38
Table A.2.27: The effect of freedom and participation rights on control of corruption adding regime type and GDP per capita	39
<b>6 A.3 REGIONAL ANALYSIS</b>	<b>40</b>
Table A.3.1: The regional effect of freedom and participation rights on GDP per capita (GMM estimates)	40
Table A.3.2: The regional effect in East Asia and Pacific of freedom and participation rights on GDP per capita growth adding regime type	41
Table A.3.3: The regional effect in Sub-Saharan Africa of freedom and participation rights on GDP per capita growth adding covariates (GMM)	42
Table A.3.4: The regional effect in Europe and Central Asia of freedom and participation rights on GDP per capita growth adding covariates (GMM)	43
Table A.3.5: The regional effect in Sub-Saharan Africa of freedom and participation rights on GDP per capita growth adding covariates in fixed samples (Within estimates, 10 lags)	44
Table A.3.6: The regional effect in Sub-Saharan Africa of freedom and participation rights on GDP per capita growth adding covariates in fixed samples (GMM estimates, 10 lags)	45
Table A.3.7: The regional effect in Sub-Saharan Africa of freedom and participation rights on GDP per capita growth adding covariates in fixed samples (Within estimates, 15 lags)	46

Table A.3.8: The regional effect in Sub-Saharan Africa of freedom and participation rights on GDP per capita growth adding covariates in fixed samples (GMM estimates, 15 lags)	47
Table A.3.9: The regional effect in Europe and Central Asia of freedom and participation rights on GDP per capita growth adding covariates in fixed samples (Within estimates, 10 lags)	48
Table A.3.10: The regional effect in Europe and Central Asia of freedom and participation rights on GDP per capita growth adding covariates in fixed samples (GMM estimates, 10 lags)	49
Table A.3.11: The regional effect in Europe and Central Asia of freedom and participation rights on GDP per capita growth adding covariates in fixed samples (Within estimates, 15 lags)	50
Table A.3.12: The regional effect in Europe and Central Asia of freedom and participation rights on GDP per capita growth adding covariates in fixed samples (GMM estimates, 15 lags)	51
Table A.3.13: The regional effect in OPEC of freedom and participation rights on GDP per capita growth	52
Table A.3.14: The regional effect in former Soviet countries of freedom and participation rights on GDP per capita growth	53
Table A.3.15: The regional effect in Sub-Saharan Africa of freedom and participation rights on investment	53
Table A.3.16: The regional effect in Sub-Saharan Africa of freedom and participation rights on investment adding regime type and GDP per capita	54
Table A.3.17: The regional effect in Sub-Saharan Africa of freedom and participation rights on trade	55
Table A.3.18: The regional effect in Sub-Saharan Africa of freedom and participation rights on trade adding regime type and GDP per capita	56
Table A.3.19: The regional effect in Europe and Central Asia of freedom and participation rights on investment	57
Table A.3.20: The regional effect in Europe and Central Asia of freedom and participation rights on investment adding regime type and GDP per capita	58
Table A.3.21: The regional effect in Europe and Central Asia of freedom and participation rights on trade	59
Table A.3.22: The regional effect in Europe and Central Asia of freedom and participation rights on trade adding regime type and GDP per capita	60
Table A.3.23: The regional effect in Sub-Saharan Africa of freedom and participation rights on government effectiveness	61
Table A.3.24: The regional effect in Sub-Saharan Africa of freedom and participation rights on government effectiveness adding regime type and GDP per capita	62
Table A.3.25: The regional effect in Sub-Saharan Africa of freedom and participation rights on control of corruption	63
Table A.3.26: The regional effect in Sub-Saharan Africa of freedom and participation rights on control of corruption adding regime type and GDP per capita	64
Table A.3.27: The regional effect in Europe and Central Asia of freedom and participation rights on government effectiveness	65
Table A.3.28: The regional effect in Europe and Central Asia of freedom and participation rights on government effectiveness adding regime type and GDP per capita	66
Table A.3.29: The regional effect in Europe and Central Asia of freedom and participation rights on control of corruption	67

Table A.3.30: The regional effect in Europe and Central Asia of freedom and participation rights on control of corruption adding regime type and GDP per capita 68

# 1 A.0 COUNTRY LIST

**TABEL A.0.1 COUNTRY LIST**

Country	Year	Avg. Emp. Index	Std Dev.	Country	Year	Avg. Emp. Index	Std Dev.
Albania	1981	7.23	4.90	Congo,	1981	3.00	1.15
Algeria	1981	4.45	1.41	Democratic			
Andorra	2001	12.40	0.52	Republic of			
Angola	1981	3.60	2.01	Costa Rica	1981	12.42	1.15
Argentina	1981	12.13	1.45	Côte d'Ivoire	1981	6.19	1.45
Armenia	1992	6.35	2.03	Croatia	1992	9.05	1.73
Australia	1981	13.26	0.68	Cuba	1981	1.65	0.95
Austria	1981	11.97	0.98	Cyprus	1981	10.39	1.52
Azerbaijan	1992	4.35	1.23	Czech Republic	1993	11.32	0.89
Bahamas	2001	12.50	1.27	Denmark	1981	13.61	0.72
Bahrain	2001	4.77	1.18	Djibouti	2001	6.60	1.51
Bangladesh	1981	7.39	1.43	Dominica	2001	12.80	0.63
Barbados	1981	13.30	1.06	Dominican	1981	10.94	2.03
Belarus	1992	3.00	1.84	Republic			
Belgium	1981	12.97	0.66	Ecuador	1981	11.06	1.71
Belize	1981	13.10	0.75	Egypt	1981	4.65	1.70
Benin	1981	9.23	2.31	El Salvador	1981	11.13	1.96
Bhutan	1981	4.97	1.94	Equatorial	2001	3.70	1.16
Bolivia	1981	10.55	2.08	Guinea			
Botswana	1981	11.65	1.45	Eritrea	1993	3.74	3.00
Brazil	1981	11.90	1.27	Estonia	1992	13.15	0.88
Brunei	1985	3.93	1.30	Ethiopia	1981	4.40	2.85
Darussalam				Fiji	1981	10.29	3.10
Bulgaria	1981	6.81	4.26	Finland	1981	13.65	0.75
Burkina Faso	1981	8.94	2.00	France	1981	12.87	1.18
Burundi	1981	5.11	2.04	Gabon	1981	6.52	1.41
Cambodia	1988	6.88	3.48	Gambia	1981	9.43	2.56
Cameroon	1981	3.94	1.67	Georgia	1992	8.05	1.79
Canada	1981	12.90	0.40	Germany	1981	11.32	1.17
Cape Verde	2001	12.60	0.52	Ghana	1981	8.06	3.05
Central African	1981	5.58	1.12	Greece	1981	9.58	1.75
Republic				Grenada	2001	13.50	0.53
Chad	1984	6.29	1.70	Guatemala	1981	10.23	2.51
Chile	1981	10.71	2.56	Guinea	1981	5.19	1.19
China	1981	1.03	1.02	Guinea-Bissau	1981	8.83	2.31
Colombia	1981	10.90	1.64	Guyana	1981	10.29	2.48
Comoros	2001	9.20	1.14	Honduras	1981	12.06	1.95
Congo,	1981	7.10	3.12	Hungary	1981	10.39	3.44
Republic of the				Iceland	1981	13.61	0.72

Country	Year	Avg. Emp. Index	Std Dev.	Country	Year	Avg. Emp. Index	Std Dev.
India	1981	9.55	1.91	Panama	1982	10.97	1.92
Indonesia	1981	4.39	1.76	Papua New Guinea	1981	12.10	1.16
Iran	1981	1.65	1.17	Paraguay	1981	9.48	2.98
Iraq	1981	1.59	1.55	Peru	1981	10.77	1.54
Ireland	1981	12.71	0.64	Philippines	1981	11.32	1.54
Israel	1981	7.13	2.38	Poland	1981	10.19	2.76
Italy	1981	13.00	1.24	Portugal	1981	13.03	1.05
Jamaica	1981	13.00	1.10	Romania	1981	7.00	3.71
Japan	1981	13.84	0.45	Russia	1992	4.75	1.94
Jordan	1981	4.35	1.11	Rwanda	1981	5.13	1.94
Kazakhstan	1992	4.60	1.90	Saint Lucia	2001	13.50	0.71
Kenya	1981	5.32	1.54	Saint Vincent and the Grenadines	2001	12.80	0.42
Korea, Republic of	1981	9.00	2.21	Samoa	2001	12	1.49
Kyrgyzstan	1992	6.40	1.54	Saudi Arabia	1981	0.71	1.01
Laos	1981	2.74	1.44	Senegal	1981	10.61	1.91
Latvia	1992	11.10	1.59	Seychelles	2001	8.00	0.67
Lebanon	2001	6.45	1.13	Sierra Leone	1981	8.67	1.59
Lesotho	1981	9.69	2.81	Singapore	1981	5.45	1.31
Liberia	1981	7.52	1.90	Slovakia	1993	11.47	1.35
Lithuania	1992	11.30	1.45	Slovenia	1992	12.80	0.77
Luxembourg	1981	13.87	0.34	Solomon Islands	2001	12.50	0.71
Macedonia	1993	11.37	1.64	South Africa	1981	8.35	4.14
Madagascar	1981	8.90	2.69	Spain	1981	12.87	1.20
Malawi	1981	7.74	3.43	Sri Lanka	1981	8.42	3.11
Malaysia	1981	5.45	2.05	Sudan	1981	2.32	2.76
Mali	1981	9.39	2.88	Suriname	2001	11.50	0.71
Malta	2001	13.10	0.88	Swaziland	1981	4.68	1.25
Mauritania	1981	5.90	1.35	Sweden	1981	13.45	0.77
Mauritius	1981	13.03	1.02	Switzerland	1981	12.87	0.99
Mexico	1981	10.61	1.38	Syrian Arab Republic	1981	2.10	1.11
Moldova	1992	8.35	2.01	Tajikistan	1992	5.30	1.42
Mongolia	1981	8.71	4.97	Tanzania	1981	4.87	1.48
Morocco	1981	4.68	1.70	Thailand	1981	8.45	2.28
Mozambique	1981	7.35	2.90	Togo	1981	5.16	1.49
Myanmar	1981	0.97	1.14	Trinidad and Tobago	1981	13.10	0.94
Namibia	1981	9.71	3.41	Tunisia	1981	5.80	2.07
Nepal	1981	6.81	1.90	Turkey	1981	6.16	1.27
Netherlands	1981	13.71	0.53	Turkmenistan	1992	2.00	1.75
New Zealand	1981	13.90	0.30	Uganda	1981	6.00	1.76
Nicaragua	1982	8.73	4.33	Ukraine	1992	6.70	1.75
Niger	1981	7.19	2.34				
Nigeria	1981	5.16	2.85				
Norway	1981	13.03	1.05				
Oman	1981	2.19	1.49				
Pakistan	1981	4.55	1.52				

---

<b>Country</b>	<b>Year</b>	<b>Avg. Emp. Index</b>	<b>Std Dev.</b>
United Arab Emirates	1981	1.39	0.72
United Kingdom	1981	12.45	1.03
United States	1981	11.97	0.18
Uruguay	1981	12.29	1.88
Uzbekistan	1992	2.10	2.36
Vanuatu	2001	12.70	0.67
Venezuela	1981	10.27	2.91
Vietnam	1981	0.87	0.76
Yemen	1991	4.00	2.02
Zambia	1981	7.48	1.43
Zimbabwe	1981	5.81	3.66

---

## 2 A.0.2 REGIME TYPE

**TABEL A.0.2 DATA FROM 1980-2014 UNLESS OTHERWISE NOTED –  
THE AVG. CHANGE IS IN ABSOLUTE VALUES**

Country	Regime type 2014	Average regime type	# of regime changes	Min. value of regime	Max. value of regime	Avg. change in regime type
Albania	9	1.9	6	-9	9	4.7
Algeria	2	-3.2	4	-9	2	5.3
Andorra	-	-	-	-	-	-
Angola	-2	-3.6	6	-7	0	1.8
Argentina	8	6.3	4	-9	8	4.8
Armenia (1991)	5	4.3	3	-6	7	8.0
Australia	10	10	0	10	10	0.0
Austria	10	10	0	10	10	0.0
Azerbaijan (1991)	-7	-6.0	4	-7	1	3.0
Bahamas	-	-	-	-	-	-
Bahrain	-10	-8.8	6	-10	-5	1.7
Bangladesh	1	1.4	7	-7	6	6.1
Barbados	-	-	-	-	-	0.0
Belarus (1991)	-7	-4.4	2	-7	7	7.0
Belgium	8	9.5	1	8	10	2.0
Belize	-	-	-	-	-	-
Benin	7	2.4	3	-7	7	4.7
Bhutan	5	-6.9	3	-10	5	5.0
Bolivia	7	7.5	4	-7	9	4.5
Botswana	8	7.3	2	6	8	1.0
Brazil	8	6.3	3	-4	8	4.0
Brunei	-	-	-	-	-	-
Darussalam	-	-	-	-	-	-
Bulgaria	9	4.1	2	-7	9	8.0
Burkina Faso	0	-3.5	4	-7	0	1.8
Burundi	6	-0.9	9	-7	6	2.6
Cambodia (1988)	2	1.3	3	-7	2	6.0
Cameroon	-4	-5.3	3	-8	-4	2.0
Canada	10	10.0	0	10	10	0.0
Cape Verde	10	5.2	4	-4	10	3.5



Country	Regime type 2014	Average regime type	# of regime changes	Min. value of regime	Max. value of regime	Avg. change in regime type
Central African Republic	0	-1.4	4	-7	5	4.8
Chad	-2	-3.0	5	-7	0	2.4
Chile	10	5.1	5	-7	10	3.4
China	-7	-7.0	0	-7	-7	0.0
Colombia	7	7.5	2	7	9	1.5
Comoros	9	1.9	11	-7	9	3.5
Congo, Republic of	-4	-4.1	5	-8	5	5.2
Congo, Democratic Republic of	5	-1.5	6	-9	5	2.3
Costa Rica	10	10.0	0	10	10	0.0
Côte d'Ivoire	4	-3.6	6	-9	4	3.5
Croatia (1991)	9	4.1	4	-5	9	4.0
Cuba	-7	-7.0	0	-7	-7	0.0
Cyprus	10	10.0	0	10	10	0.0
Czech Republic (1993)	9	9.6	1	9	10	1.0
Denmark	10	10.0	0	10	10	0.0
Djibouti	4	-3.0	4	-8	4	3.0
Dominica	-	-	-	-	-	-
Dominican Republic	8	7.0	2	5	8	2.0
Ecuador	5	7.4	7	5	9	1.4
Egypt	-4	-5.2	4	-6	-2	1.5
El Salvador	8	6.3	6	-2	8	1.7
Equatorial Guinea	-5	-5.7	1	-7	-5	2.0
Eritrea (1993)	-7	-6.6	1	-7	-6	1.0
Estonia (1991)	9	7.9	2	6	9	1.5
Ethiopia	-3	-2.9	4	-8	1	3.5
Fiji	2	3.1	8	-4	9	4.9
Finland	10	10.0	0	10	10	0.0
France	9	8.8	1	8	9	1.0
Gabon	3	-4.3	3	-9	3	4.0
Gambia	-5	-0.2	5	-7	8	3.8
Georgia (1991)	7	5.5	4	4	7	1.3

Country	Regime type 2014	Average regime type	# of regime changes	Min. value of regime	Max. value of regime	Avg. change in regime type
Germany (1990)	10	10.0	0	10	10	0.0
Ghana	8	1.3	6	-7	8	4.7
Greece	10	9.7	1	8	10	2.0
Grenada	-	-	-	-	-	-
Guatemala	8	4.3	5	-7	8	3.4
Guinea	4	-3.1	5	-9	4	2.6
Guinea-Bissau	6	-0.5	10	-8	6	4.7
Guyana	6	1.5	1	-7	6	13.0
Honduras	7	6.1	5	1	7	1.6
Hungary	10	5.6	3	-7	10	5.7
Iceland	-	-	-	-	-	-
India	9	8.6	1	8	9	1.0
Indonesia	9	-0.3	4	-7	9	4.0
Iran	-7	-4.2	5	-7	3	4.6
Iraq*	3	-6.9	1	-9	3	12.0
Ireland	10	10.0	0	10	10	0.0
Israel	10	9.5	1	9	10	1.0
Italy	10	10.0	0	10	10	0.0
Jamaica	9	9.4	1	9	10	1.0
Japan	10	10.0	0	10	10	0.0
Jordan	-3	-4.3	4	-10	-2	2.3
Kazakhstan (1991)	-6	-4.9	2	-6	-3	1.5
Kenya	9	-0.3	7	-7	9	2.7
Korea. Republic of	8	4.5	4	-8	8	4.0
Kyrgyzstan (1991)	7	0.2	6	-3	7	2.7
Laos	-7	-7.0	0	-7	-7	0.0
Latvia (1991)	8	8.0	0	8	8	0.0
Lebanon**	6	3.0	1	0	6	6.0
Lesotho	8	1.9	6	-7	8	5.2
Liberia	6	-0.0	6	-7	6	2.2
Lithuania (1991)	10	10.0	0	10	10	0.0
Luxembourg	10	10.0	0	10	10	0.0
Macedonia (1991)	9	7.6	1	6	9	3.0
Madagascar	6	2.3	7	-6	9	4.3
Malawi	6	-0.1	5	-9	6	3.8

Country	Regime type 2014	Average regime type	# of regime changes	Min. value of regime	Max. value of regime	Avg. change in regime type
Malaysia	5	4.0	3	3	6	1.7
Mali	5	1.9	6	-7	7	4.7
Malta	-	-	-	-	-	-
Mauritania	-2	-5.2	6	-7	4	3.8
Mauritius	10	9.9	1	9	10	1.0
Mexico	8	3.6	4	-3	8	2.8
Moldova (1991)	9	7.8	3	5	9	1.3
Mongolia	10	4.6	3	-7	10	5.7
Morocco	-4	-6.6	3	-8	-4	1.3
Mozambique	6	0.1	5	-8	6	3.2
Myanmar	-3	-6.7	5	-8	-3	1.8
Namibia (1990)	6	6.0	0	6	6	0.0
Nepal	6	1.9	5	-9	6	7.8
Netherlands	10	10.0	0	10	10	0.0
New Zealand	10	10.0	0	10	10	0.0
Nicaragua	9	5.1	5	-5	9	3.8
Niger	6	0.5	8	-7	8	7.4
Nigeria	4	0.1	6	-7	7	4.8
Norway	10	10.0	0	10	10	0.0
Oman	-8	-8.9	2	-10	-8	1.0
Pakistan	7	1.1	9	-7	8	4.7
Panama	9	4.9	5	-8	9	4.2
Papua New Guinea	5	4.1	1	4	5	1.0
Paraguay	9	3.1	6	-8	9	3.2
Peru	9	6.3	5	-3	9	4.8
Philippines	8	5.2	5	-9	8	3.4
Poland	10	4.9	7	-8	10	2.9
Portugal	10	9.9	1	9	10	1.0
Romania	9	3.4	4	-8	9	4.3
Russia (1992)	4	4.3	3	3	6	2.3
Rwanda	-3	-5.3	5	-7	-3	1.2
Saint Lucia	-	-	-	-	-	-
Saint Vincent and the Grenadines	-	-	-	-	-	-
Samoa	-	-	-	-	-	-

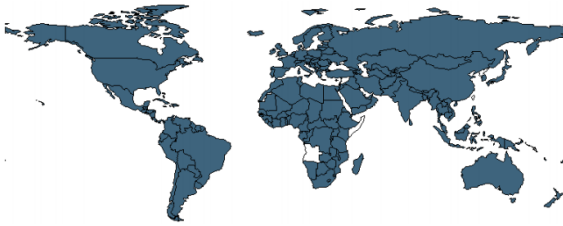
Country	Regime type 2014	Average regime type	# of regime changes	Min. value of regime	Max. value of regime	Avg. change in regime type
Saudi Arabia	-10	-10	0	-10	-10	0.0
Senegal	7	2.6	3	-2	8	3.7
Seychelles	-	-	-	-	-	0.0
Sierra Leone	7	-0.7	7	-7	7	3.4
Singapore	-2	-2.0	0	-2	-2	0.0
Slovakia (1993)	10	9.0	2	7	10	1.5
Slovenia (1991)	10	10.0	0	10	10	0.0
Solomon Islands	8	7.0	3	0	8	5.7
South Africa	9	7.2	4	4	9	1.3
Spain	10	9.9	1	9	10	1.0
Sri Lanka	3	4.9	6	3	6	1.2
Sudan	-4	-4.6	7	-7	7	5.0
Suriname	5	2.5	4	-6	5	4.0
Swaziland	-9	-9.4	1	-10	-9	1.0
Sweden	10	10.0	0	10	10	0.0
Switzerland	10	10.0	0	10	10	0.0
Syrian Republic	-9	-8.3	2	-9	-7	2.0
Tajikistan (1991)	-3	-3.3	4	-6	-1	2.8
Tanzania	-1	-3.1	2	-6	-1	2.5
Thailand	-3	5.0	8	-5	9	6.4
Togo	-2	-4.0	5	-7	-2	1.8
Trinidad and Tobago	10	9.4	2	8	10	1.0
Tunisia	7	-3.7	8	-9	7	2.3
Turkey	9	6.5	5	-5	9	3.6
Turkmenistan (1991)	-8	-8.9	2	-9	-8	1.0
Uganda	-1	-2.6	4	-7	3	4.0
Ukraine (1991)	4	6.3	6	4	7	1.3
United Arab Emirates	-8	-8.0	0	-8	-8	0.0
United Kingdom	10	10.0	0	10	10	0.0
United States	10	10.0	0	10	10	0.0
Uruguay	10	7.5	2	-7	10	8.5
Uzbekistan (1991)	-9	-9.0	0	-9	-9	0.0

Country	Regime type 2014	Average regime type	# of regime changes	Min. value of regime	Max. value of regime	Avg. change in regime type
Vanuatu	-	-	-	-	-	-
Venezuela	4	6.3	6	-3	9	3.2
Vietnam	-7	-7.0	0	-7	-7	0.0
Yemen (1990)	0	-1.8	5	-5	3	2.2
Zambia	7	0.6	4	-9	7	6.5
Zimbabwe	4	-2.3	6	-6	4	3.7

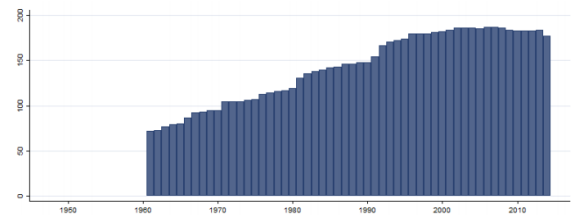
\* No data on Iraq between 2003-2009, \*\*No data on Lebanon between 1990-2004

### 3 A.0.3 DATA COVERAGE

#### A.0.3.1 – GDP pr. Capita growth (annual %)



Min. Year: 2011 Max. Year: 2013 N: 185

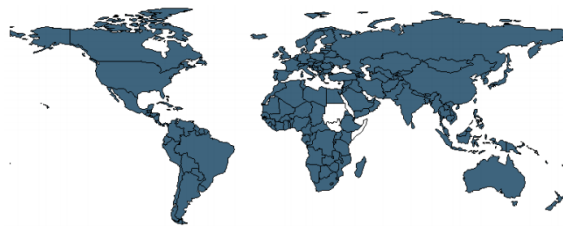


Min. Year: 1961 Max. Year: 2014 N: 196 n: 7690

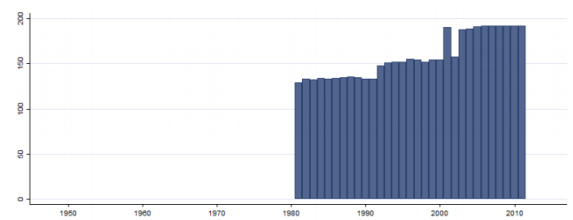
$\bar{N}$ : 142  $\bar{T}$ :39

#### A.0.3.2 – Empowerment Index

This is an additive index constructed from the Foreign Movement, Domestic Movement, Freedom of Speech, Freedom of Assembly and Association, Workers' Rights, Electoral Self-Determination, and Freedom of Religion indicators.



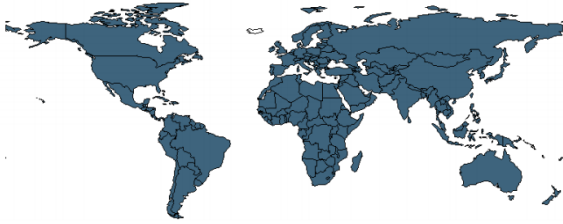
Min. Year: 2011 Max. Year: 2011 N: 191



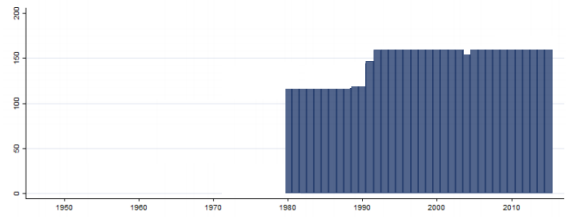
Min. Year: 1981 Max. Year: 2011 N: 199 n: 4907

$\bar{N}$ : 158  $\bar{T}$ :25

## A.0.3.3 – Regime Type

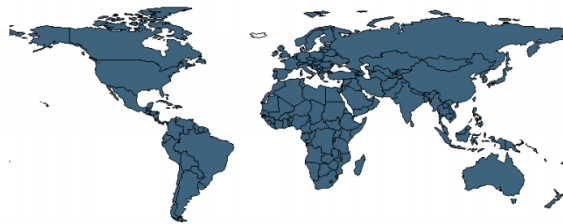


Min. Year: 2014 Max. Year: 2014 N: 153

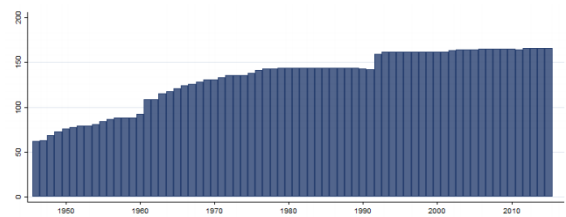


Min. Year: 1980 Max. Year: 2014 N: 153 n: 5056  
 $\bar{N}$ : 144  $\bar{T}$ : 33

## A.0.3.4 – Conflict

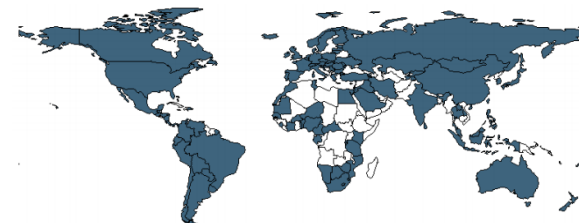


Min. Year: 2013 Max. Year: 2013 N: 166

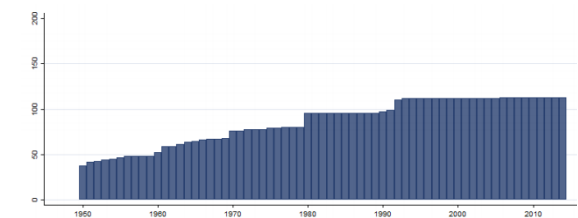


Min. Year: 1946 Max. Year: 2015 N: 182 n: 9299  
 $\bar{N}$ : 133  $\bar{T}$ : 51

## A.0.3.5 - Total Factor Productivity (TFP) at constant national prices (2005=1)



Min. Year: 2013 Max. Year: 2013 N: 113



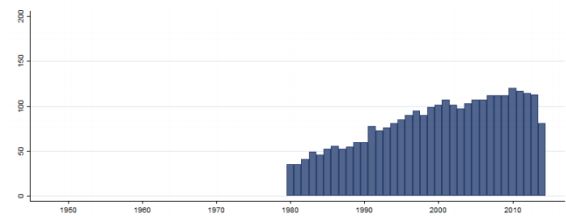
MIN Year: 1950 Max. Year 2014 N:116 n: 5602  
 $\bar{N}$ : 86  $\bar{T}$ : 48

## A.0.3.6 - Unemployment, total (% of total labor force) (nat. est.)

Unemployment refers to the share of the labor force that is without work but available for and seeking employment. Definitions of labor force and unemployment differ by country.



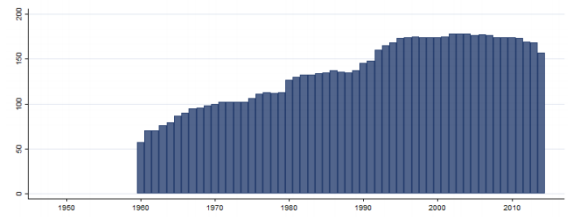
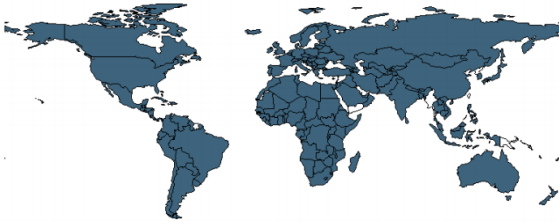
Min. Year: 2010 Max. Year 2014 N: 146



Min. Year: 1980 Max. Year 2014 N:179 n: 2912  
 $\bar{N}$ : 83  $\bar{T}$ : 16

A.0.3.7 – Trade (% of GDP) (wdi\_trade)

Trade is the sum of exports and imports of goods and services measured as a share of gross domestic product.



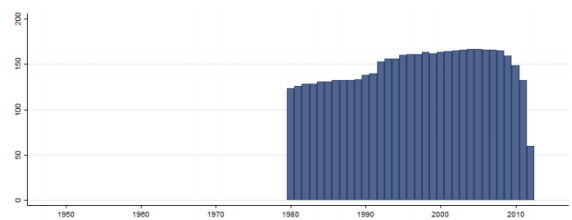
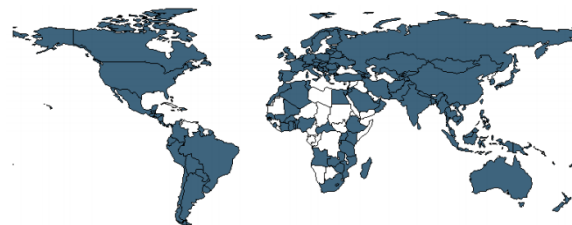
Min. Year: 2010 Max. Year: 2013 N: 177

Min. Year: 1960 Max. Year: 2014 N:187 n: 7473

$\bar{N}$ : 136  $\bar{T}$ : 40

A.0.3.8 - Total investment (percent of GDP) (imf\_inv)

Total investment (% of GDP). Expressed as a ratio of total investment in current local currency and GDP in current local currency. Investment or gross capital formation is measured by the total value of the gross fixed capital formation and changes in inventories and acquisitions less disposals of valuables for a unit or sector.

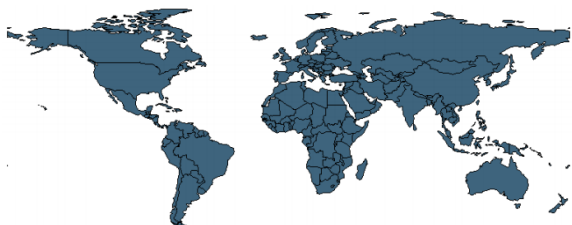


Min. Year: 2010 Max. Year: 2012 N: 149

Min. Year: 1980 Max. Year: 2012 N: 172 n: 4835

$\bar{N}$ : 147  $\bar{T}$ : 28

A.0.3.9 – Government effectiveness, rule of law, and control of corruption



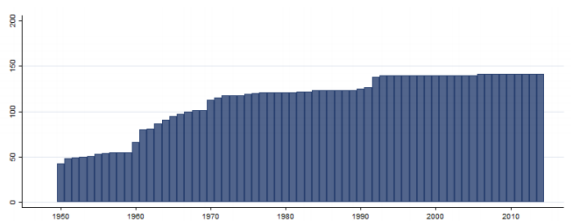
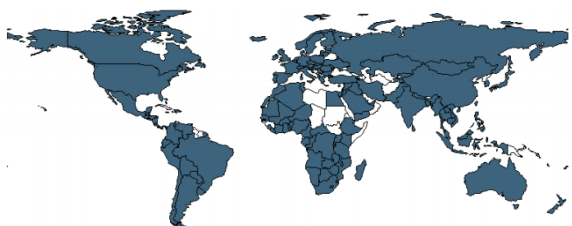
Min. Year: 2013 Max. Year: 2013 N: 192

Min. Year: 1996 Max. Year: 2014 N: 193 n: 3013

$\bar{N}$ : 159  $\bar{T}$ :16

A.0.3.10 - Human Capital Index (pwt\_hci)

Human capital index, based on years of schooling (Barro/Lee, 2010) and assumed returns.

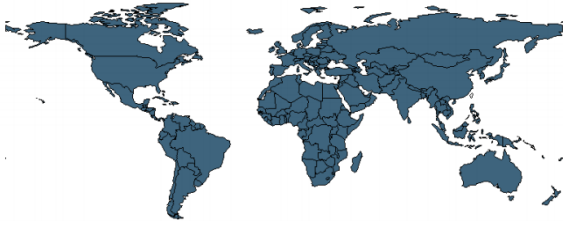


Min. Year: 2013 Max. Year: 2013 N: 141

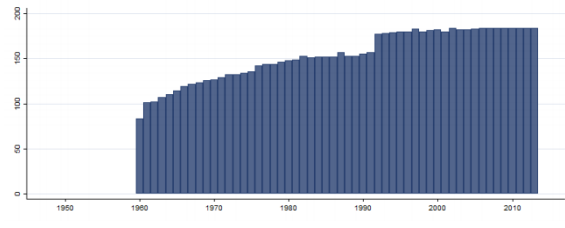
Min. Year: 1950 Max. Year: 2014 N: 146 n: 7299

$\bar{N}$ : 112  $\bar{T}$ :50

A.0.3.11 – Life Expectancy (wdi\_lifeexp)



Min. Year: 2011 Max. Year: 2013 N: 185



Min. Year: 1960 Max. Year: 2013 N: 195 n: 8308  
 $\bar{N}$ : 154  $\bar{T}$ :43



## 4 A.1 GRANGER CAUSALITY TESTS

TABLE A.1.1: CAUSALITY FROM FREEDOM AND PARTICIPATION RIGHTS TO GROWTH

Lags	Test-statistic	P-value	Observations	AR2-test
1	0.11	[0.74]	4237	0.19
2	2.49	[0.29]	4172	0.27
3	1.78	[0.62]	4018	0.50
4	2.07	[0.72]	3855	0.59
5	2.12	[0.83]	3690	0.64
6	1.66	[0.95]	3527	0.76
7	4.55	[0.71]	3365	0.55
8	4.38	[0.82]	3196	0.74
9	7.79	[0.56]	3027	-0.25
10	32.63***	[0.00]	2857	-1.28
11	16.43	[0.13]	2706	-0.50
12	18.64*	[0.10]	2555	0.98
13	23.88**	[0.03]	2408	-0.11
14	29.00***	[0.01]	2260	-1.10
15	50.73***	[0.00]	2113	-1.22
16	34.37***	[0.00]	1966	-0.16

**Note:** The model is estimated using the system-GMM estimator. Lags refer to the number of lags of the regressor, the test statistic is  $\chi^2$  and is reported with corresponding p-values inside [ ]: \*  $p < 0.10$ , \*\*  $p < 0.05$ , \*\*\*  $p < 0.01$ . The AR2 test denotes the statistics of serial uncorrelated residuals of second order.

**TABLE A.1.1.1: CAUSALITY FROM FREEDOM OF RELIGION TO GROWTH**

Lags	Test-statistic	P-value	Observations	AR2-test
4	22.31***	[0.00]	4.199	0.56
5	9.32*	[0.10]	4.037	0.58
6	43.43***	[0.00]	3.874	0.63
7	44.23***	[0.00]	3.712	0.74
8	92.85***	[0.00]	3.546	0.67
9	54.09***	[0.00]	3.380	-0.10
10	54.27***	[0.00]	3.213	-0.72
11	93.52***	[0.00]	3.048	-0.08
12	212.64***	[0.00]	2.883	1.50
13	330.90***	[0.00]	2.722	0.88
14	68.522***	[0.00]	2.558	0.36
15	134.22***	[0.00]	2.396	1.16
16	148.80***	[0.00]	2.231	0.90

**Note:** The model is estimated using the system-GMM estimator. Lags refer to the number of lags of the regressor, the test statistic is  $\chi^2$  and is reported with corresponding p-values inside [ ]: \*  $p < 0.10$ , \*\*  $p < 0.05$ , \*\*\*  $p < 0.01$ . The AR2 test denotes the statistics of serial uncorrelated residuals of second order.

**TABLE A.1.1.2: CAUSALITY FROM FREEDOM OF SPEECH TO GROWTH**

Lags	Test-statistic	P-value	Observations	AR2-test
4	7.61	[0.11]	3.880	0.45
5	8.74	[0.12]	3.718	0.76
6	16.44***	[0.01]	3.556	0.65
7	39.31***	[0.00]	3.394	0.56
8	53.99***	[0.00]	3.225	0.65
9	43.61***	[0.00]	3.056	-0.41
10	53.10***	[0.00]	2.885	-1.37
11	27.81***	[0.00]	2.732	-0.45
12	35.45***	[0.00]	2.579	0.93
13	28.38***	[0.01]	2.431	-0.21
14	31.98***	[0.00]	2.282	-0.97
15	29.10**	[0.02]	2.134	-0.85
16	33.52***	[0.01]	1.986	0.34

**Note:** The model is estimated using the system-GMM estimator. Lags refer to the number of lags of the regressor, the test statistic is  $\chi^2$  and is reported with corresponding p-values inside [ ]: \*  $p < 0.10$ , \*\*  $p < 0.05$ , \*\*\*  $p < 0.01$ . The AR2 test denotes the statistics of serial uncorrelated residuals of second order.

**TABLE A.1.1.3: CAUSALITY FROM FREEDOM OF DOMESTIC MOVEMENT TO GROWTH**

Lags	Test-statistic	P-value	Observations	AR2-test
4	35.20***	[0.00]	4.222	0.46
5	11.11**	[0.05]	4.063	0.55
6	32.96***	[0.00]	3.903	0.66
7	44.71***	[0.00]	3.743	0.57
8	82.91***	[0.00]	3.579	0.76
9	41.74***	[0.00]	3.415	-0.01
10	51.63***	[0.00]	3.249	-0.68
11	36.18***	[0.00]	3.084	-0.09
12	75.44***	[0.00]	2.919	1.31
13	128.60***	[0.00]	2.759	0.58
14	73.24***	[0.00]	2.596	0.27
15	118.34***	[0.00]	2.434	0.87
16	100.96***	[0.00]	2.272	0.95

**Note:** The model is estimated using the system-GMM estimator. Lags refer to the number of lags of the regressor, the test statistic is  $\chi^2$  and is reported with corresponding p-values inside [ ]: \*  $p < 0.10$ , \*\*  $p < 0.05$ , \*\*\*  $p < 0.01$ . The AR2 test denotes the statistics of serial uncorrelated residuals of second order.

**TABLE A.1.1.4: CAUSALITY FROM FREEDOM OF FOREIGN MOVEMENT TO GROWTH**

Lags	Test-statistic	P-value	Observations	AR2-test
4	26.42***	[0.00]	4.227	0.42
5	67.03***	[0.00]	4.069	0.48
6	410.26***	[0.00]	3.909	0.63
7	209.14***	[0.00]	3.749	0.55
8	228.54***	[0.00]	3.585	0.70
9	295.14***	[0.00]	3.421	-0.08
10	241.13***	[0.00]	3.255	-0.73
11	190.52***	[0.00]	3.090	-0.13
12	285.55***	[0.00]	2.925	1.09
13	58.68***	[0.00]	2.765	0.38
14	314.80***	[0.00]	2.602	0.19
15	147.79***	[0.00]	2.440	0.93
16	200.70***	[0.00]	2.278	0.96

**Note:** The model is estimated using the system-GMM estimator. Lags refer to the number of lags of the regressor, the test statistic is  $\chi^2$  and is reported with corresponding p-values inside [ ]: \*  $p < 0.10$ , \*\*  $p < 0.05$ , \*\*\*  $p < 0.01$ . The AR2 test denotes the statistics of serial uncorrelated residuals of second order.

**TABLE A.1.1.5: CAUSALITY FROM FREEDOM OF ASSEMBLY AND ASSOCIATION TO GROWTH**

Lags	Test-statistic	P-value	Observations	AR2-test
4	2.26	[0.69]	3.872	0.45
5	5.97	[0.31]	3.709	0.66
6	10.82*	[0.09]	3.547	0.53
7	23.83***	[0.00]	3.385	0.53
8	23.92***	[0.00]	3.216	0.64
9	27.60***	[0.00]	3.047	-0.42
10	29.09***	[0.00]	2.876	-0.96
11	35.40***	[0.00]	2.724	-0.43
12	35.94***	[0.00]	2.572	0.94
13	42.18***	[0.00]	2.425	-0.14
14	40.63***	[0.00]	2.277	-0.86
15	46.64***	[0.00]	2.130	-1.33
16	75.26***	[0.00]	1.983	-0.04

**Note:** The model is estimated using the system-GMM estimator. Lags refer to the number of lags of the regressor, the test statistic is  $\chi^2$  and is reported with corresponding p-values inside [ ]: \*  $p < 0.10$ , \*\*  $p < 0.05$ , \*\*\*  $p < 0.01$ . The AR2 test denotes the statistics of serial uncorrelated residuals of second order.

**TABLE A.1.1.6: CAUSALITY FROM ELECTORAL SELF-DETERMINATION TO GROWTH**

Lags	Test-statistic	P-value	Observations	AR2-test
4	31.88***	[0.00]	3.880	0.55
5	52.33***	[0.00]	3.718	0.61
6	54.00***	[0.00]	3.556	0.57
7	65.84***	[0.00]	3.394	0.51
8	142.34***	[0.00]	3.225	0.58
9	207.97***	[0.00]	3.056	-0.30
10	155.37***	[0.00]	2.885	-1.29
11	235.42***	[0.00]	2.732	-0.40
12	136.66***	[0.00]	2.579	1.06
13	166.84***	[0.00]	2.431	-0.11
14	258.52***	[0.00]	2.282	-1.06
15	108.69***	[0.00]	2.134	-1.07
16	150.31***	[0.00]	1.986	0.06

**Note:** The model is estimated using the system-GMM estimator. Lags refer to the number of lags of the regressor, the test statistic is  $\chi^2$  and is reported with corresponding p-values inside [ ]: \*  $p < 0.10$ , \*\*  $p < 0.05$ , \*\*\*  $p < 0.01$ . The AR2 test denotes the statistics of serial uncorrelated residuals of second order.

**TABLE A.1.1.7: CAUSALITY FROM WORKER RIGHTS TO GROWTH**

Lags	Test-statistic	P-value	Observations	AR2-test
4	38.31***	[0.00]	3.876	0.37
5	36.39***	[0.00]	3.713	0.59
6	39.40***	[0.00]	3.551	0.68
7	41.99***	[0.00]	3.389	0.59
8	44.39***	[0.00]	3.220	0.66
9	39.76***	[0.00]	3.051	-0.42
10	47.60***	[0.00]	2.880	-1.16
11	46.83***	[0.00]	2.727	-0.47
12	37.05***	[0.00]	2.574	0.98
13	59.16***	[0.00]	2.426	-0.19
14	60.49***	[0.00]	2.277	-0.60
15	63.69***	[0.00]	2.129	-0.83
16	72.79***	[0.00]	1.981	0.29

**Note:** The model is estimated using the system-GMM estimator. Lags refer to the number of lags of the regressor, the test statistic is  $\chi^2$  and is reported with corresponding p-values inside [ ]: \*  $p < 0.10$ , \*\*  $p < 0.05$ , \*\*\*  $p < 0.01$ . The AR2 test denotes the statistics of serial uncorrelated residuals of second order.

**TABLE A.1.2: CAUSALITY FROM GROWTH TO FREEDOM AND PARTICIPATION RIGHTS**

Lags	Test-statistic	P-value	Observations	AR2-test
1	0.21	[0.64]	3875	0.10
2	0.44	[0.80]	3860	0.07
3	0.42	[0.94]	3844	0.17
4	1.35	[0.85]	3818	0.18
5	7.12	[0.21]	3686	0.15
6	6.22	[0.40]	3549	0.43
7	4.46	[0.73]	3412	0.13
8	4.98	[0.76]	3270	0.22
9	12.12	[0.21]	3126	0.33
10	9.37	[0.50]	2982	0.33
11	6.00	[0.87]	2839	0.25
12	9.46	[0.66]	2696	0.23
13	7.56	[0.87]	2553	0.05
14	12.28	[0.58]	2410	0.46
15	11.90	[0.69]	2266	0.53
16	14.77	[0.54]	2118	0.14

**Note:** The model is estimated using the system-GMM estimator. Lags refer to the number of lags of the regressor, the test statistic is  $\chi^2$  and is reported with corresponding p-values inside [ ]: \*  $p < 0.10$ , \*\*  $p < 0.05$ , \*\*\*  $p < 0.01$ . The AR2 test denotes the statistics of serial uncorrelated residuals of second order.

**TABLE A.1.2.1: CAUSALITY FROM GROWTH TO FREEDOM OF RELIGION**

Lags	Test-statistic	P-value	Observations	AR2-test
4	3.32	[0.51]	4.151	0.61
5	5.40	[0.37]	4.001	0.67
6	8.12	[0.23]	3.848	0.79
7	9.02	[0.25]	3.695	0.83
8	8.44	[0.39]	3.536	0.74
9	7.63	[0.57]	3.376	0.80
10	4.55	[0.92]	3.217	0.54
11	9.49	[0.58]	3.058	0.82
12	16.22	[0.18]	2.899	1.17
13	11.01	[0.61]	2.740	1.45
14	20.17	[0.12]	2.582	1.32
15	26.98	[0.03]	2.422	1.39
16	17.58	[0.35]	2.260	1.22

**Note:** The model is estimated using the system-GMM estimator. Lags refer to the number of lags of the regressor, the test statistic is  $\chi^2$  and is reported with corresponding p-values inside [ ]: \*  $p < 0.10$ , \*\*  $p < 0.05$ , \*\*\*  $p < 0.01$ . The AR2 test denotes the statistics of serial uncorrelated residuals of second order.

**TABLE A.1.2.2: CAUSALITY FROM GROWTH TO FREEDOM OF SPEECH**

Lags	Test-statistic	P-value	Observations	AR2-test
4	6.88	[0.14]	3.843	0.24
5	5.35	[0.37]	3.707	0.62
6	6.58	[0.36]	3.568	0.72
7	6.45	[0.49]	3.429	0.10
8	4.63	[0.80]	3.285	0.25
9	5.49	[0.79]	3.140	0.80
10	4.10	[0.94]	2.995	0.68
11	4.81	[0.94]	2.850	0.65
12	4.81	[0.96]	2.705	0.45
13	8.64	[0.80]	2.561	0.10
14	8.67	[0.85]	2.417	0.60
15	17.88	[0.27]	2.272	1.17
16	19.06	[0.27]	2.123	0.74

**Note:** The model is estimated using the system-GMM estimator. Lags refer to the number of lags of the regressor, the test statistic is  $\chi^2$  and is reported with corresponding p-values inside [ ]: \*  $p < 0.10$ , \*\*  $p < 0.05$ , \*\*\*  $p < 0.01$ . The AR2 test denotes the statistics of serial uncorrelated residuals of second order.

**TABLE A.1.2.3: CAUSALITY FROM GROWTH TO FREEDOM OF DOMESTIC MOVEMENT**

Lags	Test-statistic	P-value	Observations	AR2-test
4	0.69	[0.95]	4.174	0.34
5	1.05	[0.96]	4.022	0.24
6	2.81	[0.83]	3.867	0.28
7	4.86	[0.68]	3.712	0.16
8	8.72	[0.37]	3.553	0.24
9	6.32	[0.71]	3.392	0.36
10	7.25	[0.70]	3.231	0.54
11	6.45	[0.84]	3.070	0.49
12	5.78	[0.93]	2.909	0.42
13	9.89	[0.70]	2.749	0.63
14	21.76*	[0.08]	2.589	0.44
15	14.93	[0.46]	2.428	0.20
16	21.29	[0.17]	2.265	0.46

**Note:** The model is estimated using the system-GMM estimator. Lags refer to the number of lags of the regressor, the test statistic is  $\chi^2$  and is reported with corresponding p-values inside [ ]: \*  $p < 0.10$ , \*\*  $p < 0.05$ , \*\*\*  $p < 0.01$ . The AR2 test denotes the statistics of serial uncorrelated residuals of second order.

**TABLE A.1.2.4: CAUSALITY FROM GROWTH TO FREEDOM OF FOREIGN MOVEMENT**

Lags	Test-statistic	P-value	Observations	AR2-test
4	1.41	[0.84]	4.177	0.25
5	1.14	[0.95]	4.023	0.05
6	1.88	[0.93]	3.867	0.16
7	2.03	[0.96]	3.712	0.11
8	1.90	[0.98]	3.553	0.07
9	1.97	[0.99]	3.392	0.08
10	2.36	[0.99]	3.231	-0.03
11	3.51	[0.98]	3.070	-0.28
12	7.00	[0.86]	2.909	-0.20
13	10.41	[0.66]	2.749	-0.11
14	13.45	[0.49]	2.589	0.07
15	17.60	[0.28]	2.428	-0.09
16	19.47	[0.25]	2.265	-0.16

**Note:** The model is estimated using the system-GMM estimator. Lags refer to the number of lags of the regressor, the test statistic is  $\chi^2$  and is reported with corresponding p-values inside [ ]: \*  $p < 0.10$ , \*\*  $p < 0.05$ , \*\*\*  $p < 0.01$ . The AR2 test denotes the statistics of serial uncorrelated residuals of second order.

**TABLE A.1.2.5: CAUSALITY FROM GROWTH TO FREEDOM OF ASSEMBLY AND ASSOCIATION**

Lags	Test-statistic	P-value	Observations	AR2-test
4	1.68	[0.79]	3.835	0.29
5	1.78	[0.88]	3.700	0.38
6	2.49	[0.87]	3.561	0.15
7	1.93	[0.96]	3.422	0.03
8	4.76	[0.78]	3.278	0.19
9	5.46	[0.79]	3.133	0.08
10	8.80	[0.55]	2.988	0.09
11	11.80	[0.38]	2.844	0.04
12	16.18	[0.18]	2.700	-0.10
13	16.78	[0.21]	2.557	0.04
14	32.44***	[0.00]	2.414	-0.08
15	20.44	[0.16]	2.270	-0.20
16	14.37	[0.57]	2.122	-0.13

**Note:** The model is estimated using the system-GMM estimator. Lags refer to the number of lags of the regressor, the test statistic is  $\chi^2$  and is reported with corresponding p-values inside [ ]: \*  $p < 0.10$ , \*\*  $p < 0.05$ , \*\*\*  $p < 0.01$ . The AR2 test denotes the statistics of serial uncorrelated residuals of second order.

**TABLE A.1.2.6: CAUSALITY FROM GROWTH TO ELECTORAL SELF-DETERMINATION**

Lags	Test-statistic	P-value	Observations	AR2-test
4	3.90	[0.42]	3.843	0.74
5	9.80	[0.08]	3.707	0.75
6	9.05	[0.17]	3.568	1.14
7	10.27	[0.17]	3.429	0.68
8	9.86	[0.27]	3.285	1.15
9	12.22	[0.20]	3.140	1.48
10	9.23	[0.51]	2.995	0.50
11	8.31	[0.69]	2.850	0.16
12	9.68	[0.64]	2.705	0.33
13	12.91	[0.45]	2.561	0.06
14	17.37	[0.24]	2.417	0.71
15	20.04	[0.17]	2.272	0.97
16	28.36	[0.03]	2.123	0.36

**Note:** The model is estimated using the system-GMM estimator. Lags refer to the number of lags of the regressor, the test statistic is  $\chi^2$  and is reported with corresponding p-values inside [ ]: \*  $p < 0.10$ , \*\*  $p < 0.05$ , \*\*\*  $p < 0.01$ . The AR2 test denotes the statistics of serial uncorrelated residuals of second order.



**TABLE A.1.1.7: CAUSALITY FROM GROWTH TO WORKER RIGHTS**

Lags	Test-statistic	P-value	Observations	AR2-test
4	1.51	[0.83]	3.839	0.48
5	1.34	[0.93]	3.703	0.70
6	1.34	[0.97]	3.565	0.65
7	4.35	[0.74]	3.427	0.42
8	4.82	[0.78]	3.284	0.48
9	3.40	[0.95]	3.140	0.40
10	5.08	[0.89]	2.995	0.27
11	5.45	[0.91]	2.850	0.26
12	8.91	[0.71]	2.705	-0.13
13	6.38	[0.93]	2.561	-0.53
14	16.91	[0.26]	2.417	0.37
15	12.97	[0.60]	2.272	1.20
16	24.62*	[0.08]	2.123	0.82

**Note:** The model is estimated using the system-GMM estimator. Lags refer to the number of lags of the regressor, the test statistic is  $\chi^2$  and is reported with corresponding p-values inside [ ]: \*  $p < 0.10$ , \*\*  $p < 0.05$ , \*\*\*  $p < 0.01$ . The AR2 test denotes the statistics of serial uncorrelated residuals of second order.

## 5 A.2. GLOBAL ANALYSIS

**TABLE A.2.1: THE EFFECT OF CIVIL LIBERTIES ON GDP PER CAPITA GROWTH**

	Within estimates		System-GMM estimates	
	(1)	(2)	(3)	(4)
Civil liberties	-1.53*** (0.59)	-0.92 (0.67)	-1.34* (0.79)	-1.48** (0.66)
GDP per capita (lagged)	-4.07* (2.27)	-1.61*** (0.59)	-2.20** (0.91)	-1.55** (0.70)
<b>Long-run effect of Civil liberties</b>	<b>-0.81**</b> (-1.98)	<b>-1.28**</b> (-2.21)	<b>0.56</b> (0.41)	<b>-1.41</b> (-1.63)
Lags of civil liberties	10	15	10	15
Lags of GDP growth	2	4	2	4
N	3282	2462	3282	2462
Countries	164	164	164	164
Time periods	22	17	22	17
AR2-test			0.38	0.15
Instruments			161	163
Sargan test			156.46	150.77

**Note:** The dependent variable is GDP per capita growth. GDP per capita in levels is included as lag 10 or 15 according to the number of lags of the regressor. Numbers inside ( ) are standard deviations except for long-run effects where numbers in ( ) are z-values. \*:  $P < 0:1$ , \*\*:  $P < 0:05$ , \*\*\*:  $P < 0:01$ . N is the total number of observations. The AR2-test denotes the test statistics of serial uncorrelated residuals of second order and the Sagan test denotes the test statistics for the test of over-identified restrictions.

**TABLE A.2.2: THE EFFECT OF POLITICAL RIGHTS ON GDP PER CAPITA GROWTH**

	Within estimates		System-GMM estimates	
	(1)	(2)	(3)	(4)
Political rights	-0.89** (0.41)	-0.63* (0.38)	-0.9 (0.56)	-0.76 (0.48)
GDP per capita (lagged)	-3.98* (2.15)	-1.50** (0.61)	-3.35*** (1.29)	-1.38** (0.70)
<b>Long-run effect of Political rights</b>	<b>-0.67***</b> (-2.88)	<b>-1.06**</b> (-2.53)	<b>-0.64</b> (-0.75)	<b>-0.92</b> (-1.08)
Lags of political rights			3282	2462
Lags of GDP growth			164	164
N	3282	2462	22	17
Countries	164	164	0.38	0.20
Time periods	22	17	161	163
AR2-test			153.99	148.44
Instruments			3282	2462
Sargan test			164	164

**Note:** The dependent variable is GDP per capita growth. GDP per capita in levels is included as lag 10 or 15 according to the number of lags of the regressor. Numbers inside ( ) are standard deviations except for long-run effects where numbers in ( ) are z-values. \*:  $P < 0:1$ , \*\*:  $P < 0:05$ , \*\*\*:  $P < 0:01$ . N is the total number of observations. The AR2-test denotes the test statistics of serial uncorrelated residuals of second order and the Sagan test denotes the test statistics for the test of over-identified restrictions.

**TABLE A.2.3: THE EFFECT OF FREEDOM AND PARTICIPATION RIGHTS ON GDP PER CAPITA GROWTH ADDING COVARIATES (5 LAGS)**

	Panel A: Within estimates				
	(1)	(2)	(3)	(4)	(5)
Empowerment index	0.00 (0.07)	0.01 (0.07)	0.04 (0.08)	0.1 (0.08)	0.07 (0.08)
GDP per capita (lagged)	-3.27*** (0.67)	-3.60** (0.63)	-7.58*** (1.12)	-3.65*** (0.78)	-5.69*** (1.14)
<b>Long-run effect of Empowerment index</b>	<b>0.05</b> (0.53)	<b>0.05</b> (0.51)	<b>-0.01</b> (-0.06)	<b>-0.17</b> (-1.38)	<b>0.24***</b> (2.69)
Regime type	0.16*** (0.04)	0.14*** (0.04)	0.24*** (0.08)	0.11** (0.05)	0.02 (0.04)
Conflict		-0.42** (0.13)			
Trade			0.04*** (0.01)		
TFP			11.57*** (1.96)		
Investments			0.20*** (0.03)		
Unemployment			-0.05 (0.05)		
Rule of law				-0.29 (0.71)	
Government effectiveness				2.05*** (0.61)	
Control of corruption				-0.07 (0.62)	
Human capital					3.07*** (0.96)
Life expectancy					0.21*** (0.04)
N	3342	3341	1696	2232	2812
Countries	152	152	98	152	121
Time periods	26	26	26	16	26

	Panel B: System-GMM estimates				
	(6)	(7)	(8)	(9)	(10)
Empowerment index	0.30*** (0.07)	0.29*** (0.08)	0.33*** (0.11)	0.34*** (0.09)	0.38** (0.19)
GDP per capita (lagged)	-1.09* (0.57)	-1.19* (0.66)	-4.92*** (0.95)	-1.94*** (0.63)	-6.63*** (2.66)
<b>Long-run effect of Empowerment index</b>	<b>0.45*</b> (1.87)	<b>0.42**</b> (2.17)	<b>0.74**</b> (2.85)	<b>0.82***</b> (3.23)	<b>0.49***</b> (3.02)
Regime type	-0.02 (0.09)	-0.01 (0.09)	0.19 (0.20)	0.06 (0.10)	-0.16 (0.11)
Conflict		-0.82** (0.41)			
Trade			0.02 (0.02)		
TFP			30.84*** (4.68)		
Investments			0.33*** (0.07)		
Unemployment			-0.02 (0.10)		
Rule of law				2.43** (1.10)	
Government effectiveness				0.11 (1.22)	
Control of corruption				0.17 (1.04)	
Human capital					6.31* (3.79)
Life expectancy					0.3 (0.19)
N	3342	3341	1696	2232	2812
Countries	152	152	98	152	121
Time periods	26	26	26	16	26
AR2-test	0.69	0.7	-0.32	-0.28	0.37
Instruments	209	186	139	148	137
Sargan test	139.23	137.9	102.3	123.2	132.3

**Note:** The dependent variable is GDP per capita growth. All models include 2 lags of GDP per capita growth and 10 lags of the empowerment index. GDP per capita in levels is included as lag 10 according to the number of lags of the empowerment index. Numbers inside ( ) are standard deviations except for long-run effects where numbers in ( ) are z-values. \*:  $P < 0.1$ , \*\*:  $P < 0.05$ , \*\*\*:  $P < 0.01$ . N is the total number of observations. The AR2-test denotes the test statistics of serial uncorrelated residuals of second order and the Sargan test denotes the test statistics for the test of over-identified restrictions.

**TABLE A.2.4: THE EFFECT OF FREEDOM AND PARTICIPATION RIGHTS ON GDP PER CAPITA GROWTH ADDING COVARIATES (15 LAGS)**

	Panel A: Within estimates				
	(1)	(2)	(3)	(4)	(5)
Empowerment index	0.23*** (0.08)	0.23*** (0.08)	0.10 (0.10)	0.21** (0.08)	0.27*** (0.09)
GDP per capita (lagged)	1.31* (0.72)	1.32* (0.72)	-1.62 (1.23)	1.22 (0.75)	-0.19 (0.79)
<b>Long-run effect of Empowerment index</b>	<b>0.38***</b> (2.92)	<b>0.38***</b> (2.93)	<b>0.14</b> (0.85)	<b>0.28**</b> (1.98)	<b>0.51***</b> (3.65)
Regime type	0.06 (0.05)	0.06 (0.05)	0.20 (0.13)	0.07 (0.05)	0.01 (0.05)
Conflict		-0.07 (0.23)			
Trade			0.02** (0.01)		
TFP			15.04*** (4.50)		
Investments			0.28*** (0.04)		
Unemployment			-0.03 (0.09)		
Rule of law				-0.11 (0.80)	
Government effectiveness				1.14 (0.72)	
Control of corruption				0.53 (0.65)	
Human capital					0.64 (1.97)
Life expectancy					0.15 (0.09)
N	1846	1846	1040	1846	1591
Countries	142	142	96	142	119
Time periods	16	16	16	16	16

Panel B: System-GMM estimates

	(6)	(7)	(8)	(9)	(10)
Empowerment index	0.35*** (0.12)	0.36*** (0.11)	0.37*** (0.14)	0.34*** (0.12)	0.29*** (0.10)
GDP per capita (lagged)	-0.55 (0.50)	-0.43 (0.46)	-4.33*** (0.89)	-0.88 (0.66)	-2.86*** (0.93)
<b>Long-run effect of Empowerment index</b>	<b>0.94***</b> (2.77)	<b>0.95***</b> (2.83)	<b>0.63**</b> (2.45)	<b>0.90**</b> (2.16)	<b>0.83***</b> (2.67)
Regime type	0.05 (0.10)	0.01 (0.11)	-0.05 (0.28)	0.00 (0.11)	0.00 (0.12)
Conflict		-0.20 (0.51)			
Trade			0.02 (0.02)		
TFP			50.20*** (6.26)		
Investments			0.31*** (0.07)		
Unemployment			-0.08 (0.09)		
Rule of law				1.07 (1.09)	
Government effectiveness				-0.61 (1.08)	
Control of corruption				0.84 (0.83)	
Human capital					1.04 (2.72)
Life expectancy					0.20 (0.15)
N	1846	1846	1040	1846	1591
Countries	142	142	96	142	119
Time periods	16	16	16	16	16
AR2-test	-0.64	-0.62	-1.46	-0.62	-0.31
Instruments	185	156	129	158	157
Sargan test	127.34	129.99	93.62	133.2	124.2

**Note:** The dependent variable is GDP per capita growth. All models include 2 lags of GDP per capita growth and 10 lags of the empowerment index. GDP per capita in levels is included as lag 10 according to the number of lags of the empowerment index. Numbers inside ( ) are standard deviations except for long-run effects where numbers in ( ) are z-values. \*:  $P < 0.1$ , \*\*:  $P < 0.05$ , \*\*\*:  $P < 0.01$ . N is the total number of observations. The AR2-test denotes the test statistics of serial uncorrelated residuals of second order and the Sargan test denotes the test statistics for the test of over-identified restrictions.

**TABLE A.2.5: THE EFFECT OF FREEDOM AND PARTICIPATION RIGHTS ON GDP PER CAPITA GROWTH ADDING COVARIATES USING FIXED SAMPLE (WITHIN ESTIMATES, 10 LAGS)**

	Panel A: Within estimates					
	(a.1)	(a.2)	(b.1)	(b.2)	(c.1)	(c.2)
Empowerment index	-0.01 (0.10)	0.02 (0.09)	0.20** (0.08)	0.19** (0.08)	0.03 (0.08)	0.08 (0.08)
GDP per capita (lagged)	-1.46** (0.62)	-2.47*** (0.92)	-0.90 (0.91)	-0.88 (0.91)	-1.68** (0.67)	-3.02*** (0.82)
<b>Long-run effect of Empowerment index</b>	<b>0.20</b> (1.23)	<b>0.19</b> (1.41)	<b>0.24</b> (1.56)	<b>0.20</b> (1.18)	<b>0.43***</b> (3.11)	<b>0.48***</b> (3.35)
Regime type	0.08 (0.07)	0.13 (0.10)	0.05 (0.05)	0.06 (0.05)	0.08* (0.04)	0.02 (0.04)
Trade		0.03** (0.01)				
TFP		6.41*** (2.42)				
Investments		0.25*** (0.04)				
Unemployment		-0.08 (0.07)				
Rule of law				-0.88 (0.74)		
Government effectiveness				1.27** (0.64)		
Control of corruption				0.53 (0.63)		
Human capital						2.32* (1.27)
Life expectancy						0.12** (0.05)
N	1392	1392	2032	2032	2193	2193
Countries	97	97	145	145	121	121
Time periods	21	21	16	16	21	21

**Note:** The dependent variable is GDP per capita growth. All models include 2 lags of GDP per capita growth and 10 lags of the empowerment index. GDP per capita in levels is included as lag 10 according to the number of lags of the empowerment index. Numbers inside ( ) are standard deviations except for long-run effects where numbers in ( ) are z-values. \*:  $P < 0.1$ , \*\*:  $P < 0.05$ , \*\*\*:  $P < 0.01$ . N is the total number of observations.



**TABLE A.2.6: THE EFFECT OF FREEDOM AND PARTICIPATION RIGHTS ON GDP PER CAPITA GROWTH ADDING COVARIATES USING FIXED SAMPLE (GMM ESTIMATES, 10 LAGS)**

Panel B: System GMM estimates						
	(a.1)	(a.2)	(b.1)	(b.2)	(.c.1)	(c.2)
Empowerment index	0.21** (0.09)	0.32*** (0.12)	0.41** (0.16)	0.39*** (0.15)	0.41** (0.16)	0.39*** (0.15)
GDP per capita (lagged)	-3.52*** (0.72)	-2.84*** (0.73)	-1.92*** (0.67)	-3.21*** (0.84)	-1.92*** (0.67)	-3.21*** (0.84)
<b>Long-run effect of Empowerment index</b>	<b>0.86*** (2.89)</b>	<b>0.70** (2.37)</b>	<b>0.81*** (4.53)</b>	<b>0.81*** (4.73)</b>	<b>0.81*** (4.53)</b>	<b>0.81*** (4.73)</b>
Regime type	0.08 (0.14)	-0.07 (0.22)	-0.09 (0.11)	-0.12 (0.10)	-0.09 (0.11)	-0.12 (0.10)
Trade		0.00 (0.02)				
TFP		34.15*** (4.62)				
Investments		0.36*** (0.06)				
Unemployment		-0.03 (0.09)				
Rule of law						
Government effectiveness						
Control of corruption						
Human capital				2.01 (2.28)		2.01 (2.28)
Life expectancy				0.09 (0.15)		0.09 (0.15)
N	1392	1392	2193	2193	2193	2193
Countries	97	97	121	121	121	121
Time periods	21	21	21	21	21	21
AR2-test	-0.53	0,29	-0.86	-1,13	-0.86	-1,13
Instruments	155	139	155	157	155	157
Sargan test	86,7	83,12	112.5	111,21	112.5	111,21

**Note:** The dependent variable is GDP per capita growth. All models include 2 lags of GDP per capita growth and 10 lags of the empowerment index. GDP per capita in levels is included as lag 10 according to the number of lags of the empowerment index. Numbers inside ( ) are standard deviations except for long-run effects where numbers in ( ) are z-values. \*:  $P < 0.1$ , \*\*:  $P < 0.05$ , \*\*\*:  $P < 0.01$ . N is the total number of observations. The AR2-test denotes the test statistics of serial uncorrelated residuals of second order and the Sagan test denotes the test statistics for the test of over-identified restrictions.

**TABLE A.2.7: THE EFFECT OF FREEDOM AND PARTICIPATION RIGHTS ON GDP PER CAPITA GROWTH ADDING COVARIATES USING FIXED SAMPLE (WITHIN ESTIMATES, 15 LAGS)**

	Panel A: Within estimates					
	(a.1)	(a.2)	(b.1)	(b.2)	(.c.1)	(c.2)
Empowerment index	0.12 (0.11)	0.10 (0.10)	0.23** (0.08)	0.21** (0.08)	0.24*** (0.09)	0.27*** (0.09)
GDP per capita (lagged)	0.29 (0.92)	-1.62 (1.23)	1.31* (0.72)	1.22 (0.75)	0.46 (0.75)	-0.09 (0.79)
<b>Long-run effect of Empowerment index</b>	<b>0.47***</b> (2.27)	<b>0.14</b> (0.85)	<b>0.38*</b> (2.92)	<b>0.28*</b> (1.98)	<b>0.45***</b> (3.29)	<b>0.51***</b> (3.65)
Regime type	0.10 (0.12)	0.20 (0.13)	0.06 (0.05)	0.07 (0.05)	0.04 (0.06)	0.01 (0.05)
Trade		0.02** (0.01)				
TFP		15.04*** (4.50)				
Investments		0.28*** (0.04)				
Unemployment		-0.03 (0.09)				
Rule of law				-0.11 (0.80)		
Government effectiveness				1.14 (0.72)		
Control of corruption				0.53 (0.65)		
Human capital						0.64 (1.97)
Life expectancy						0.15 (0.09)
N	1040	1040	1846	1846	1591	1591
Countries	96	96	142	142	119	119
Time periods	16	16	16	16	16	16

**Note:** The dependent variable is GDP per capita growth. All models include 2 lags of GDP per capita growth and 15 lags of the empowerment index. GDP per capita in levels is included as lag 10 according to the number of lags of the empowerment index. Numbers inside ( ) are standard deviations except for long-run effects where numbers in ( ) are z-values. \*:  $P < 0.1$ , \*\*:  $P < 0.05$ , \*\*\*:  $P < 0.01$ . N is the total number of observations.

**TABLE A.2.8: THE EFFECT OF FREEDOM AND PARTICIPATION RIGHTS ON GDP PER CAPITA GROWTH ADDING COVARIATES USING FIXED SAMPLE (GMM, 15 LAGS)**

	Panel A: Within estimates					
	(a.1)	(a.2)	(b.1)	(b.2)	(.c.1)	(c.2)
Empowerment index	0.23** (0.14)	0.34** (0.14)	0.35*** (0.12)	0.34*** (0.12)	0.28** (0.09)	0.29*** (0.10)
GDP per capita (lagged)	-2.83*** (0.94)	-4.06*** (0.91)	-0.43 (0.47)	-0.88 (0.66)	-1.36** (0.56)	-2.86*** (0.93)
<b>Long-run effect of Empowerment index</b>	<b>0.99***</b> (2.50)	<b>0.60**</b> (2.29)	<b>0.99***</b> (2.85)	<b>0.9***</b> (2.16)	<b>0.90***</b> (2.81)	<b>0.83***</b> (2.67)
Regime type	0.08 (0.16)	-0.09 (0.30)	0.01 (0.11)	0.00 (0.11)	0.07 (0.12)	-0.00 (0.12)
Trade		0.02 (0.01)				
TFP		47.21*** (7.04)				
Investments		0.30*** (0.05)				
Unemployment		-0.06 (0.09)				
Rule of law				1.07 (1.07)		
Government effectiveness				-0.61 (1.08)		
Control of corruption				0.84 (0.83)		
Human capital						1.04 (2.72)
Life expectancy						0.20 (0.15)
N	1040	1040	1846	1846	1591	1591
Countries	96	96	142	142	119	119
Time periods	16	16	16	16	16	16
AR2-test	-0,38	-1.43	-0,58	-0,64	-0.32	-0,31
Instruments	155	159	155	158	155	157
Sargan test	79,92	77,49	133.00	128,23	108,70	105,20

**Note:** The dependent variable is GDP per capita growth. All models include 2 lags of GDP per capita growth and 15 lags of the empowerment index. GDP per capita in levels is included as lag 10 according to the number of lags of the empowerment index. Numbers inside ( ) are standard deviations except for long-run effects where numbers in ( ) are z-values. \*:  $P < 0:1$ , \*\*:  $P < 0:05$ , \*\*\*:  $P < 0:01$ . N is the total number of observations. The AR2-test denotes the test statistics of serial uncorrelated residuals of second order and the Sargan test denotes the test statistics for the test of over-identified restrictions.

**TABLE A.2.9: THE EFFECT OF THE SUB-INDICATORS ON GDP PER CAPITA GROWTH (GMM ESTIMATES)**

<b>Panel B: System-GMM estimates</b>							
	Freedom of religion	Freedom of speech	Freedom of domestic movement	Freedom of foreign movement	Freedom of assembly and association	Electoral self-determination	Worker rights
Short-run effect	-0.94 (0.65)	0.56* (0.32)	-0.52 (0.82)	0.18 (0.52)	1.56*** (0.40)	1.15*** (0.26)	0.72* (0.38)
GDP per capita (lagged)	-3.03** (1.38)	-1.31** (0.64)	-3.29*** (0.95)	-3.10** (1.53)	-1.24** (0.59)	-1.37* (0.72)	-0.78* (0.47)
<b>Long-run effect</b>	<b>-0.46</b> (-0.17)	<b>3.50</b> (1.38)	<b>0.75</b> (0.23)	<b>0.44</b> (0.26)	<b>3.27**</b> (2.32)	<b>2.99</b> (1.48)	<b>2.00</b> (1.31)
N	2942	2652	2977	2982	2644	2652	2647
Countries	165	148	165	165	148	148	148
Time periods	21	21	21	21	21	21	21
AR2-test	-1.30	-1.34	-1.02	-1.09	-1.11	-1.24	-1.06
Instruments	194	194	194	194	194	194	194
Sargan test	140.4	142.6	157.2	158.2	138.3	132.3	144.8

**Note:** The dependent variable is GDP per capita growth. All models include 2 lags of GDP per capita growth and 10 lags of the sub-indicator. GDP per capita in levels is included as lag 10 according to the number of lags of the sub-indicator. Numbers inside ( ) are standard deviations except for long-run effects where numbers in ( ) are z-values. \*:  $P < 0:1$ , \*\*:  $P < 0:05$ , \*\*\*:  $P < 0:01$ . N is the total number of observations. The AR2-test denotes the test statistics of serial uncorrelated residuals of second order and the Sagan test denotes the test statistics for the test of over-identified restrictions.

**TABLE A.2.10: THE EFFECT OF THE SUB-INDICATORS ON GDP PER CAPITA GROWTH (5 LAGS)**

Panel A: Within estimates							
	Freedom of religion	Freedom of speech	Freedom of domestic movement	Freedom of foreign movement	Freedom of assembly and association	Electoral self-determination	Worker rights
Short-run effect	-0.25 (0.25)	-0.15 (0.21)	-0.26 (0.37)	-0.19 (0.34)	0.76*** (0.23)	0.33* (0.18)	-0.15 (0.16)
GDP per capita (lagged)	-3.51*** (0.51)	-3.10*** (0.64)	-3.50*** (0.50)	-3.46** (0.47)	-2.93*** (0.61)	-3.32*** (0.63)	-3.29*** (0.66)
<b>Long-run effect</b>	<b>-0.26</b> (-0.61)	<b>0.78**</b> (2.30)	<b>-0.53</b> (-0.73)	<b>0.23</b> (0.51)	<b>1.36***</b> (4.41)	<b>1.86***</b> (6.78)	<b>-0.1</b> (-0.33)
N	3810	3497	3839	3844	3488	3497	3492
Countries	166	166	166	166	166	166	166
Time periods	26	26	26	26	26	26	26

**Note:** The dependent variable is GDP per capita growth. All models include 2 lags of GDP per capita growth and 5 lags of the sub-indicator. GDP per capita in levels is included as lag 10 according to the number of lags of the sub-indicator. Numbers inside ( ) are standard deviations except for long-run effects where numbers in ( ) are z-values. \*:  $P < 0:1$ , \*\*:  $P < 0:05$ , \*\*\*:  $P < 0:01$ . N is the total number of observations.

**TABLE A.2.11: THE EFFECT OF THE SUB-INDICATORS ON GDP PER CAPITA GROWTH (15 LAGS)**

Panel A: Within estimates							
	Freedom of religion	Freedom of speech	Freedom of domestic movement	Freedom of foreign movement	Freedom of assembly and association	Electoral self-determination	Worker rights
Short-run effect	-0.48 (0.63)	0.27 (0.27)	-0.11 (0.45)	0.09 (0.43)	0.61*** (0.20)	0.32 (0.23)	0.12 (0.23)
GDP per capita (lagged)	-0.15 (0.84)	0.86 (0.70)	0.18 (0.76)	-0.25 (0.79)	0.87 (0.70)	0.85 (0.70)	0.52 (0.73)
Long-run effect	<b>0.47</b> (0.50)	<b>1.48*</b> (1.90)	<b>1.62</b> (1.06)	<b>-0.30</b> (-0.43)	<b>1.27</b> (1.57)	<b>2.59***</b> (3.48)	<b>-0.30</b> (-0.46)
N	2113	1910	2150	2155	1907	1910	1905
Countries	163	146	163	163	145	146	146
Time periods	16	16	16	16	16	16	16

**Note:** The dependent variable is GDP per capita growth. All models include 2 lags of GDP per capita growth and 15 lags of the sub-indicator. GDP per capita in levels is included as lag 10 according to the number of lags of the sub-indicator. Numbers inside ( ) are standard deviations except for long-run effects where numbers in ( ) are z-values. \*:  $P < 0.1$ , \*\*:  $P < 0.05$ , \*\*\*:  $P < 0.01$ . N is the total number of observations.

**TABLE A.2.12: CAUSALITY FROM FREEDOM AND PARTICIPATION RIGHTS TO INVESTMENT**

Lags	Test-statistic	P-value
4	2.25	[0.69]
5	3.04	[0.69]
6	3.09	[0.80]
7	6.13	[0.52]
8	2.50	[0.96]
9	9.81	[0.37]
10	6.83	[0.74]
11	6.80	[0.82]
12	20.71*	[0.05]
13	10.29	[0.67]
14	31.20**	[0.01]
15	39.79***	[0.00]

**Note:** The model is estimated using the system-GMM estimator. Lags refer to the number of lags of the regressor, the test statistic is  $\chi^2$  and is reported with corresponding p-values inside [ ]: \*  $p < 0.10$ , \*\*  $p < 0.05$ , \*\*\*  $p < 0.01$ .

**TABLE A.2.13: CAUSALITY FROM INVESTMENT TO FREEDOM AND PARTICIPATION RIGHTS**

Lags	Test-statistic	P-value
4	1.68	[0.79]
5	3.81	[0.58]
6	3.79	[0.70]
7	3.69	[0.81]
8	6.20	[0.62]
9	5.14	[0.82]
10	8.30	[0.60]
11	9.71	[0.56]
12	8.30	[0.76]
13	8.03	[0.84]
14	7.19	[0.93]
15	8.11	[0.92]

**Note:** The model is estimated using the system-GMM estimator. Lags refer to the number of lags of the regressor, the test statistic is  $\chi^2$  and is reported with corresponding p-values inside [ ]: \*  $p < 0.10$ , \*\*  $p < 0.05$ , \*\*\*  $p < 0.01$ .

**TABLE A.2.14: CAUSALITY FROM FREEDOM AND PARTICIPATION RIGHTS TO TRADE**

Lags	Test-statistic	P-value
4	15.00***	[0.00]
5	7.33	[0.20]
6	14.32**	[0.03]
7	9.42	[0.22]
8	18.98**	[0.01]
9	37.01***	[0.00]
10	10.56	[0.39]
11	9.48	[0.58]
12	20.20*	[0.06]
13	43.12***	[0.00]
14	37.07***	[0.00]
15	44.83***	[0.00]

**Note:** The model is estimated using the system-GMM estimator. Lags refer to the number of lags of the regressor, the test statistic is  $\chi^2$  and is reported with corresponding p-values inside [ ]: \*  $p < 0.10$ , \*\*  $p < 0.05$ , \*\*\*  $p < 0.01$ .

**TABLE A.2.15: CAUSALITY FROM TRADE TO FREEDOM AND PARTICIPATION RIGHTS**

Lags	Test-statistic	P-value
4	0.64	[0.96]
5	1.31	[0.93]
6	3.39	[0.76]
7	7.46	[0.38]
8	11.31	[0.18]
9	18.14**	[0.03]
10	13.75	[0.18]
11	11.05	[0.44]
12	10.23	[0.60]
13	7.15	[0.89]
14	10.66	[0.71]
15	11.07	[0.75]

**Note:** The model is estimated using the system-GMM estimator. Lags refer to the number of lags of the regressor, the test statistic is  $\chi^2$  and is reported with corresponding p-values inside [ ]: \*  $p < 0.10$ , \*\*  $p < 0.05$ , \*\*\*  $p < 0.01$ .

**TABLE A.2.16: THE EFFECT OF FREEDOM AND PARTICIPATION RIGHTS ON INVESTMENT**

	Within estimates		System-GMM estimates	
	10 lags	15 lags	10 lags	15 lags
Short-run effect of empowerment index	-0.10 (0.07)	0.00 (0.08)	-0.21** (0.10)	-0.04 (0.21)
<b>Long-run effect of empowerment index</b>	<b>0.35</b> (1.05)	<b>0.77*</b> (1.92)	<b>-0.33</b> (-0.62)	<b>-0.15</b> (-0.13)
Lags of GDP growth	2	4	2	4
N	2563	1867	2563	1867
Countries	142	137	142	137
Time periods	21	16	21	16
AR2-test			0.75	-0.31
Instruments			153	153
Sargan test			135.2	123.6

**Note:** The dependent variable is investment as percentage of GDP. Number inside ( ) are standard deviations except for long-run effects where numbers in ( ) are z-values. \*:  $P < 0:1$ , \*\*:  $P < 0:05$ , \*\*\*:  $P < 0:01$ . N is the total number of observations. The AR2-test denotes the test statistics of serial uncorrelated residuals of second order and the Sagan test denotes the test statistics for the test of over-identified restrictions.



**TABLE A.2.17: THE EFFECT OF FREEDOM AND PARTICIPATION RIGHTS ON INVESTMENT ADDING REGIME TYPE AND GDP PER CAPITA**

	Within estimates		System-GMM estimates	
	10 lags	15 lags	10 lags	15 lags
Short-run effect of empowerment index	-0.14*	0.00	-0.26**	-0.11
	(0.07)	(0.08)	(0.11)	(0.22)
GDP per capita	-0.97	0.21	-1.25	-0.70
	(0.68)	(0.78)	(0.85)	(1.94)
<b>Long-run effect of empowerment index</b>	<b>0.12</b>	<b>0.74*</b>	<b>-0.55</b>	<b>-0.60</b>
	(0.34)	(1.83)	(-1.05)	(-0.39)
Regime type	0.10**	0.08**	0.15	0.23
	(0.04)	(0.04)	(0.14)	(0.26)
Lags of GDP growth	2	4	2	4
N	2421	1746	2421	1746
Countries	137	132	137	132
Time periods	21	16	21	16
AR2-test			0.47	-0.33
Instruments			155	155
Sargan test			127.1	124.3

*Note:* The dependent variable is investment as percentage of GDP. GDP per capita in levels is included as lag 10 or 15 according to the number of lags of the regressor. Number inside ( ) are standard deviations except for long-run effects where numbers in ( ) are z-values. \*:  $P < 0.1$ , \*\*:  $P < 0.05$ , \*\*\*:  $P < 0.01$ . N is the total number of observations. The AR2-test denotes the test statistics of serial uncorrelated residuals of second order and the Sagan test denotes the test statistics for the test of over-identified restrictions.

**TABLE A.2.18: THE EFFECT OF FREEDOM AND PARTICIPATION RIGHTS ON TRADE**

	Within estimates		System-GMM estimates	
	10 lags	15 lags	10 lags	15 lags
Short-run effect of empowerment index	-0.20	-0.07	0.29	0.42
	(0.15)	(0.20)	(0.23)	(0.40)
<b>Long-run effect of empowerment index</b>	<b>-1.04</b>	<b>2.26</b>	<b>9.62*</b>	<b>26.63</b>
	(-0.70)	(1.07)	(1.73)	(1.04)
Lags of GDP growth	2	4	2	4
N	2661	1932	2661	1932
Countries	149	146	149	146
Time periods	21	16	21	16
AR2-test			-0.46	0.57
Instruments			153	153
Sargan test			136.8	133.7

*Note:* The dependent variable is trade in percentage of GDP. Number inside ( ) are standard deviations except for long-run effects where numbers in ( ) are z-values. \*:  $P < 0.1$ , \*\*:  $P < 0.05$ , \*\*\*:  $P < 0.01$ . N is the total number of observations. The AR2-test denotes the test statistics of serial uncorrelated residuals of second order and the Sagan test denotes the test statistics for the test of over-identified restrictions.

**TABLE A.2.19: THE EFFECT OF FREEDOM AND PARTICIPATION RIGHTS ON TRADE ADDING REGIME TYPE AND GDP PER CAPITA**

	Within estimates		System-GMM estimates	
	10 lags	15 lags	10 lags	15 lags
Short-run effect of empowerment index	-0.11 (0.15)	-0.03 (0.21)	0.08 (0.44)	0.45 (0.36)
GDP per capita	4.69*** (1.71)	2.03 (2.14)	6.07 (3.95)	3.50 (2.77)
<b>Long-run effect of empowerment index</b>	<b>-0.62</b> (-0.44)	<b>2.47</b> (1.16)	<b>-2.58</b> (-0.40)	<b>9.57</b> (0.67)
Regime type	0.05 (0.12)	0.09 (0.13)	0.44 (0.40)	-0.30 (0.38)
Lags of GDP growth	2	4	2	4
N	2517	1809	2517	1809
Countries	144	141	144	141
Time periods	21	16	21	16
AR2-test			-0.24	0.87
Instruments			155	155
Sargan test			137.5	125.4

**Note:** The dependent variable is trade as percentage of GDP. GDP per capita in levels is included as lag 10 or 15 according to the number of lags of the regressor. Number inside ( ) are standard deviations except for long-run effects where numbers in ( ) are z-values. \*:  $P < 0.1$ , \*\*:  $P < 0.05$ , \*\*\*:  $P < 0.01$ . N is the total number of observations. The AR2-test denotes the test statistics of serial uncorrelated residuals of second order and the Sagan test denotes the test statistics for the test of over-identified restrictions.

**TABLE A.2.20: CAUSALITY FROM FREEDOM AND PARTICIPATION RIGHTS TO GOVERNMENT EFFECTIVENESS**

Lags	Test-statistic	P-value
4	13.45**	[0.01]
5	13.25**	[0.02]
6	20.26***	[0.00]
7	20.18**	[0.01]
8	21.83**	[0.01]
9	24.37***	[0.00]
10	34.70***	[0.00]
11	25.38**	[0.01]
12	20.59*	[0.06]
13	19.32	[0.11]
14	30.98**	[0.01]
15	27.62**	[0.02]

**Note:** The model is estimated using the system-GMM estimator. Lags refer to the number of lags of the regressor, the test statistic is  $\chi^2$  and is reported with corresponding p-values inside [ ]: \*  $p < 0.10$ , \*\*  $p < 0.05$ , \*\*\*  $p < 0.01$ .

**TABLE A.2.21: CAUSALITY FROM GOVERNMENT EFFECTIVENESS TO FREEDOM AND PARTICIPATION RIGHTS**

Lags	Test-statistic	P-value
4	3.26	[0.52]
5	8.84	[0.12]
6	6.70	[0.35]
7	14.88**	[0.04]
8	21.23***	[0.01]
9	15.76*	[0.07]
10	19.38**	[0.04]
11	21.94**	[0.02]
12	9.72	[0.64]

**Note:** The model is estimated using the system-GMM estimator. Lags refer to the number of lags of the regressor, the test statistic is  $\chi^2$  and is reported with corresponding p-values inside [ ]: \*  $p < 0.10$ , \*\*  $p < 0.05$ , \*\*\*  $p < 0.01$ .

**TABLE A.2.22: CAUSALITY FROM FREEDOM AND PARTICIPATION RIGHTS TO CONTROL OF CORRUPTION**

Lags	Test-statistic	P-value
4	14.50**	[0.01]
5	21.24***	[0.00]
6	22.50***	[0.00]
7	20.32***	[0.00]
8	23.87***	[0.00]
9	31.82***	[0.00]
10	28.12***	[0.00]
11	28.95***	[0.00]
12	34.56***	[0.00]
13	45.61***	[0.00]
14	36.83***	[0.00]
15	35.68***	[0.00]

**Note:** The model is estimated using the system-GMM estimator. Lags refer to the number of lags of the regressor, the test statistic is  $\chi^2$  and is reported with corresponding p-values inside [ ]: \*  $p < 0.10$ , \*\*  $p < 0.05$ , \*\*\*  $p < 0.01$ .

**TABLE A.2.23: CAUSALITY FROM CONTROL OF CORRUPTION TO FREEDOM AND PARTICIPATION RIGHTS**

Lags	Test-statistic	P-value
4	1,23	[0.87]
5	2,35	[0.80]
6	9,79	[0.13]
7	45,68***	[0.00]
8	34,38***	[0.00]
9	14,56	[0.10]
10	23,58**	[0.01]
11	26,21**	[0.01]
12	11,91	[0.45]

**Note:** The model is estimated using the system-GMM estimator. Lags refer to the number of lags of the regressor, the test statistic is  $\chi^2$  and is reported with corresponding p-values inside [ ]: \*  $p < 0.10$ , \*\*  $p < 0.05$ , \*\*\*  $p < 0.01$ .

**TABLE A.2.24: THE EFFECT OF FREEDOM AND PARTICIPATION RIGHTS ON GOVERNMENT EFFECTIVENESS**

	Within estimates		System-GMM estimates	
	10 lags	12 lags	10 lags	12 lags
Short-run effect	0.00* (0.00)	0.00 (0.00)	0.01*** (0.00)	0.01* (0.00)
Long-run effect	<b>0.04**</b> (2.18)	<b>0.04*</b> (1.88)	<b>0.09***</b> (3.25)	<b>0.08**</b> (2.21)
Lags of GDP growth	2	4	2	4
N	1905	1608	1905	1608
Countries	150	147	150	147
Time periods	14	12	14	12
AR2-test			0.77	0.47
Instruments			82	87
Sargan test			102.2	104.6

**Note:** The dependent variable is government effectiveness. Numbers inside ( ) are standard deviations except for long-run effects where numbers in ( ) are z-values. \*:  $P < 0:1$ , \*\*:  $P < 0:05$ , \*\*\*:  $P < 0:01$ . N is the total number of observations. The AR2-test denotes the test statistics of serial uncorrelated residuals of second order and the Sagan test denotes the test statistics for the test of over-identified restrictions.

**TABLE A.2.25: THE EFFECT OF FREEDOM AND PARTICIPATION RIGHTS ON GOVERNMENT EFFECTIVENESS ADDING REGIME TYPE AND GDP PER CAPITA**

	Within estimates		System-GMM estimates	
	10 lags	12 lags	10 lags	12 lags
Short-run effect	0.00*	0.00	0.01**	0.01*
	(0.00)	(0.00)	(0.00)	(0.00)
GDP per capita (lagged)	0.03	0.03	0.09*	0.04
	(0.02)	(0.03)	(0.05)	(0.06)
<b>Long-run effect</b>	<b>0.04**</b>	<b>0.04*</b>	<b>0.04*</b>	<b>0.03</b>
	(1.98)	(1.91)	(1.79)	(0.89)
Regime type	0.00	0.00	0.01	0.00
	(0.00)	(0.00)	(0.00)	(0.00)
Lags of GDP growth	2	4	2	4
N	1813	1526	1813	1526
Countries	145	142	145	142
Time periods	14	12	14	12
AR2-test			0.98	0.54
Instruments			84	89
Sargan test			101.3	98.0

**Note:** The dependent variable is government effectiveness. GDP per capita in levels is included as lag 10 or 12 according to the number of lags of the regressor. Numbers inside ( ) are standard deviations except for long-run effects where numbers in ( ) are z-values. \*:  $P < 0:1$ , \*\*:  $P < 0:05$ , \*\*\*:  $P < 0:01$ . N is the total number of observations. The AR2-test denotes the test statistics of serial uncorrelated residuals of second order and the Sagan test denotes the test statistics for the test of over-identified restrictions.

**TABLE A.2.26: THE EFFECT OF FREEDOM AND PARTICIPATION RIGHTS ON CONTROL OF CORRUPTION**

	Within estimates		System-GMM estimates	
	10 lags	12 lags	10 lags	12 lags
Short-run effect	0.00	0.00	0.00	0.00
	(0.00)	(0.00)	(0.00)	(0.00)
<b>Long-run effect</b>	<b>0.03*</b>	<b>0.03*</b>	<b>-0.03</b>	<b>0.00</b>
	(1.69)	(1.75)	(-0.62)	(-0.11)
Lags of GDP growth	2	4	2	4
N	1905	1608	1905	1608
Countries	150	147	150	147
Time periods	14	12	14	12
AR2-test			1.68	0.25
Instruments			82	87
Sargan test			103.9	99.5

**Note:** The dependent variable is control of corruption. Numbers inside ( ) are standard deviations except for long-run effects where numbers in ( ) are z-values. \*:  $P < 0:1$ , \*\*:  $P < 0:05$ , \*\*\*:  $P < 0:01$ . N is the total number of observations. The AR2-test denotes the test statistics of serial uncorrelated residuals of second order and the Sagan test denotes the test statistics for the test of over-identified restrictions.

**TABLE A.2.27: THE EFFECT OF FREEDOM AND PARTICIPATION RIGHTS ON CONTROL OF CORRUPTION ADDING REGIME TYPE AND GDP PER CAPITA**

	Within estimates		System-GMM estimates	
	10 lags	12 lags	10 lags	12 lags
Short-run effect	0.00 (0.00)	0.00 (0.00)	0.00 (0.00)	0.01 (0.01)
GDP per capita (lagged)	-0.05* (0.03)	-0.03 (0.04)	0.18*** (0.06)	0.11** (0.06)
<b>Long-run effect</b>	<b>0.02</b> (1.21)	<b>0.04*</b> (1.93)	<b>-0.01</b> (-0.28)	<b>0.05</b> (1.28)
Regime type	0.00 (0.00)	0.00 (0.00)	-0.01 (0.01)	-0.01** (0.01)
Lags of GDP growth	2	4	2	4
N	1813	1526	1813	1526
Countries	145	142	145	142
Time periods	14	12	14	12
AR2-test			2.02	1.15
Instruments			84	89
Sargan test			102.3	90.2

**Note:** The dependent variable is control of corruption. GDP per capita in levels is included as lag 10 or 12 according to the number of lags of the regressor. Numbers inside ( ) are standard deviations except for long-run effects where numbers in ( ) are z-values. \*:  $P < 0:1$ , \*\*:  $P < 0:05$ , \*\*\*:  $P < 0:01$ . N is the total number of observations. The AR2-test denotes the test statistics of serial uncorrelated residuals of second order and the Sagan test denotes the test statistics for the test of over-identified restrictions.

## 6 A.3 REGIONAL ANALYSIS

**TABLE A.3.1: THE REGIONAL EFFECT OF FREEDOM AND PARTICIPATION RIGHTS ON GDP PER CAPITA (GMM ESTIMATES)**

	Panel B: System-GMM estimates						
	Sub-Saharan Africa	Europe and Central Asia	East Asia and Pacific	Middle East and Northern Africa	Latin America and Caribbean	South Asian, East Asia and Pacific	America
Short-run effect	0.30 (0.20)	0.41*** (0.11)	0.43*** (0.11)	0.48*** (0.11)	0.40*** (0.12)	0.45*** (0.12)	0.40*** (0.11)
Regional Short-run effect	0.26 (0.28)	-0.12 (0.39)	-0.44 (0.37)	-0.98** (0.45)	-0.08 (0.21)	-0.23 (0.22)	-0.09 (0.27)
GDP per capita (lagged)	-4.28*** (1.23)	-1.56* (0.80)	-1.18** (0.58)	-1.34** (0.64)	-1.48*** (0.57)	-1.16* (0.60)	-1.63*** (0.62)
<b>Long-run effect of region</b>	<b>0.13</b> (0.29)	<b>1.28</b> (1.60)	<b>0.84</b> (1.23)	<b>-1.66</b> (-0.54)	<b>0.24</b> (0.32)	<b>1.05*</b> (1.79)	<b>0.19</b> (0.27)
N	2626	2626	2626	2626	2626	2626	2626
Countries	148	148	148	148	148	148	148
Time periods	21	21	21	21	21	21	21
AR2-test	-1.18	-1.13	-1.16	-1.18	-1.25	-1.16	-1.24
Instruments	165	165	165	165	165	165	165
Sargan test	132.3	129.7	134.2	135.6	137.3	135.2	135.3

**Note:** The dependent variable is GDP per capita growth. All models include 2 lags of GDP per capita growth and 10 lags of the empowerment index. GDP per capita in levels is included as lag 10 according to the number of lags of the empowerment index. Numbers inside ( ) are standard deviations except for long-run effects where numbers in ( ) are z-values. \*:  $P < 0:1$ , \*\*:  $P < 0:05$ , \*\*\*:  $P < 0:01$ . N is the total number of observations. The AR2-test denotes the test statistics of serial uncorrelated residuals of second order and the Sargan test denotes the test statistics for the test of over-identified restrictions.

**TABLE A.3.2: THE REGIONAL EFFECT IN EAST ASIA AND PACIFIC OF FREEDOM AND PARTICIPATION RIGHTS ON GDP PER CAPITA GROWTH ADDING REGIME TYPE**

	Within estimates		System-GMM estimates	
	(1)	(2)	(1)	(2)
Short-run effect	0.10 (0.08)	0.30*** (0.09)	0.45*** (0.11)	0.44*** (0.12)
Regional Short-run effect	-0.46** (0.22)	-0.58** (0.26)	-0.42 (0.33)	-0.82** (0.41)
GDP per capita (lagged)	-2.05*** (0.64)	0.88 (0.74)	-0.96* (0.56)	-0.41 (0.48)
<b>Long-run effect of region</b>	<b>0.42</b> (1.25)	<b>0.72</b> (1.45)	<b>0.85</b> (1.23)	<b>1.55</b> (0.98)
Regime type	0.12*** (0.05)	0.08 (0.05)	-0.06 (0.08)	0.05 (0.11)
Lags of empowerment index	10	15	10	15
Lags of GDP growth	2	4	2	4
N	2567	1846	2567	1846
Countries	145	142	145	142
Time periods	21	16	22	17
AR2-test			-1.10	-0.65
Instruments			166	171
Sargan test			146.36	142.17

**Note:** The dependent variable is GDP per capita growth. GDP per capita in levels is included as lag 10 (column 1) or 15 (column 2) according to the number of lags of the regressor. Numbers inside ( ) are standard deviations except for long-run effects where numbers in ( ) are z-values. \*:  $P < 0:1$ , \*\*:  $P < 0:05$ , \*\*\*:  $P < 0:01$ . N is the total number of observations. The AR2-test denotes the test statistics of serial uncorrelated residuals of second order and the Sargan test denotes the test statistics for the test of over-identified restrictions.



**TABLE A.3.3: THE REGIONAL EFFECT IN SUB-SAHARAN AFRICA OF FREEDOM AND PARTICIPATION RIGHTS ON GDP PER CAPITA GROWTH ADDING COVARIATES (GMM)**

	Sub-Saharan Africa				
	(1)	(2)	(3)	(4)	(5)
Empowerment index	0.32 (0.20)	0.20 (0.18)	0.17 (0.11)	0.17 (0.13)	0.28 (0.28)
Regional Empowerment index effect	0.33 (0.31)	0.39 (0.33)	0.61*** (0.20)	0.51* (0.30)	0.21 (0.36)
GDP per capita (lagged)	-3.81*** (1.22)	-3.96*** (1.36)	-3.11*** (1.17)	-2.66** (1.16)	-5.74*** (1.80)
<b>Long-run effect of Empowerment index</b>	<b>0.30</b> (0.69)	<b>0.10</b> (0.15)	<b>0.70</b> (1.25)	<b>0.71</b> (0.83)	<b>0.29</b> (0.51)
Regime type	-0.1 (0.10)	-0.18 (0.11)	-0.30** (0.12)	-0.03 (0.10)	-0.1 (0.11)
Conflict		-1.15** (0.53)			
Trade			0.04*** (0.01)		
TFP					
Investments			0.16** (0.08)		
Unemployment					
Rule of law				-0.11 (1.26)	
Government effectiveness				-1.13 (1.28)	
Control of corruption				1.49* (0.88)	
Human capital					3.67 (3.71)
Life expectancy					-0.09 (0.14)
N	2567	2567	2388	2032	2193
Countries	145	145	137	145	121
Time periods	21	21	21	16	21
AR2-test	21	-0.17	0.36	-0.57	-1.01
Instruments	-1.20	207	168	164	168
Sargan test	132.4	135.2	112.2	129.2	135.6

**Note:** The dependent variable is GDP per capita growth. All models include 2 lags of GDP per capita growth and 10 lags of the empowerment index. GDP per capita in levels is included as lag 10 according to the number of lags of the empowerment index. Numbers inside ( ) are standard deviations except for long-run effects where numbers in ( ) are z-values. \*:  $P < 0.1$ , \*\*:  $P < 0.05$ , \*\*\*:  $P < 0.01$ . N is the total number of observations.

**TABLE A.3.4: THE REGIONAL EFFECT IN EUROPE AND CENTRAL ASIA OF FREEDOM AND PARTICIPATION RIGHTS ON GDP PER CAPITA GROWTH ADDING COVARIATES (GMM)**

	Europe and Central Asia				
	(1)	(2)	(3)	(4)	(5)
Empowerment index	-0.42*** (0.10)	0.41*** (0,10)	0.31* (0.18)	0.43*** -0.13	0.40*** (0.15)
Regional Empowerment index effect	-0.06 (0.36)	-0.11 (0.33)	0.18 (0.35)	-0.01 (0.23)	0.00 (0.33)
GDP per capita (lagged)	-1.53** (0.69)	-0.11 (0.12)	-2.95*** (1.00)	-1.49* -0.77	-3.58*** (1.28)
<b>Long-run effect of</b>					
<b>Empowerment index</b>	<b>1.35*</b> (1.94)	<b>1.34**</b> (2.01)	<b>1.16*</b> (1.91)	<b>1.00</b> (1.26)	<b>1.41*</b> (1.89)
Regime type	-0.06 (0.10)	-0.11 (0.12)	0.02 (0.27)	-0.01 (0.13)	-0.09 (0.08)
Conflict		-0.98** (0.49)			
Trade			0.01 (0.02)		
TFP					
Investments			0.33*** (0.07)		
Unemployment					
Rule of law				0.41 -1.12	
Government effectiveness				-0.07 -1.12	
Control of corruption				1.28 -0.98	
Human capital					3.57 (3.27)
Life expectancy					0.08 (0.19)
N	2567	2567	1392	2032	2193
Countries	145	145	97	145	121
Time periods	21	21	21	16	21
AR2-test	-1.02	-1.08	0.29	-0.63	-1.04
Instruments	166	147	130	164	148
Sargan test	128.3	129.8	79.0	109.0	129.5

**Note:** The dependent variable is GDP per capita growth. All models include 2 lags of GDP per capita growth and 10 lags of the empowerment index. GDP per capita in levels is included as lag 10 according to the number of lags of the empowerment. Numbers inside ( ) are standard deviations except for long-run effects where numbers in ( ) are z-values. \*:  $P < 0:1$ , \*\*:  $P < 0:05$ , \*\*\*:  $P < 0:01$ . N is the total number of observations.

**TABLE A.3.5: THE REGIONAL EFFECT IN SUB-SAHARAN AFRICA OF FREEDOM AND PARTICIPATION RIGHTS ON GDP PER CAPITA GROWTH ADDING COVARIATES IN FIXED SAMPLES (WITHIN ESTIMATES, 10 LAGS)**

	Panel A: Within estimates					
	(1)	(2)	(3)	(4)	(5)	(6)
Empowerment index	-0.15 (0.09)	-0.11 (0.09)	0.03 (0.09)	0.02 (0.09)	-0.14 (0.10)	-0.07 (0.10)
Regional Empowerment index effect	0.53*** (0.14)	0.53*** (0.14)	0.47*** (0.18)	0.45*** (0.17)	0.47*** (0.15)	0.44*** (0.15)
GDP per capita (lagged)	-1.82** (0.61)	-2.03*** (0.64)	-0.98 (0.90)	-0.95 (0.89)	-1.74** (0.15)	-3.16*** (0.83)
<b>Long-run effect of Empowerment index</b>	<b>0.37***</b> (3.05)	<b>0.37***</b> (3.22)	<b>0.10</b> (0.48)	<b>0.01</b> (0.05)	<b>0.40***</b> (4.14)	<b>0.40***</b> (3.41)
Regime type	0.09** (0.04)	0.07 (0.04)	0.05 (0.05)	0.06 (0.05)	0.08* (0.05)	0.02 (0.04)
Trade		0.02** (0.01)				
Investments		0.15*** (0.03)				
Rule of law				-0.74 (0.76)		
Government effectiveness				1.33** (0.63)		
Control of corruption				0.48 (0.64)		
Human capital						2.62** (1.31)
Life expectancy						0.11** (0.05)
N	2388	2388	2032	2032	2193	2193
Countries	137	137	145	145	121	121
Time periods	21	21	16	16	21	21

**Note:** The dependent variable is GDP per capita growth. All models include 2 lags of GDP per capita growth and 10 lags of the empowerment index. GDP per capita in levels is included as lag 10 according to the number of lags of the empowerment index. Numbers inside ( ) are standard deviations except for long-run effects where numbers in ( ) are z-values. \*:  $P < 0:1$ , \*\*:  $P < 0:05$ , \*\*\*:  $P < 0:01$ . N is the total number of observations.

**TABLE A.3.6: THE REGIONAL EFFECT IN SUB-SAHARAN AFRICA OF FREEDOM AND PARTICIPATION RIGHTS ON GDP PER CAPITA GROWTH ADDING COVARIATES IN FIXED SAMPLES (GMM ESTIMATES, 10 LAGS)**

	Panel B: System GMM estimates					
	(7)	(8)	(9)	(10)	(11)	(12)
Empowerment index	0.14 (0.12)	0.17* (0.10)	0.27** (0.12)	0.17 (0.13)	0.29 (0.28)	0.27 (0.27)
Regional Empowerment index effect	0.57*** (0.21)	0.58*** (0.20)	0.40 (0.26)	0.51* (0.30)	0.19 (0.34)	0.25 (0.35)
GDP per capita (lagged)	-3.31*** (1.01)	-2.59* (1.36)	-2.80** (1.01)	-2.66** (1.16)	-4.51** (1.47)	-5.04*** (1.80)
<b>Long-run effect of Empowerment index</b>	<b>0.47</b> (0.57)	<b>0.84</b> (0.49)	<b>0.51</b> (0.67)	<b>0.71</b> (0.83)	<b>0.25</b> (0.22)	<b>0.32</b> (0.27)
Regime type	-0.21* (0.12)	-0.31* (0.13)	-0.05 (0.10)	-0.03 (0.10)	-0.08 (0.12)	-0.10 (0.13)
Trade		0.04*** (0.02)				
Investments		0.17** (0.08)				
Rule of law				-0.11 (1.26)		
Government effectiveness				-1.13 (1.28)		
Control of corruption				1.49* (0.88)		
Human capital						3.49 (4.02)
Life expectancy						-0.06 (0.21)
N	2388	2388	2032	2032	2193	2193
Countries	137	137	145	145	121	121
Time periods	21	21	16	16	21	21
AR2-test	0.58	0.31	-0.14	-0.60	-1.01	-1.12
Instruments	206	208	169	164	206	208
Sargan test	121.14	125.84	131.72	132.30	105.93	108.23

**Note:** The dependent variable is GDP per capita growth. All models include 2 lags of GDP per capita growth and 10 lags of the empowerment index. GDP per capita in levels is included as lag 10 according to the number of lags of the empowerment index. Numbers inside ( ) are standard deviations except for long-run effects where numbers in ( ) are z-values. \*:  $P < 0:1$ , \*\*:  $P < 0:05$ , \*\*\*:  $P < 0:01$ . N is the total number of observations. The AR2-test denotes the test statistics of serial uncorrelated residuals of second order and the Sargan test denotes the test statistics for the test of over-identified restrictions.

**TABLE A.3.7: THE REGIONAL EFFECT IN SUB-SAHARAN AFRICA OF FREEDOM AND PARTICIPATION RIGHTS ON GDP PER CAPITA GROWTH ADDING COVARIATES IN FIXED SAMPLES (WITHIN ESTIMATES, 15 LAGS)**

	Panel A: Within estimates					
	(1)	(2)	(3)	(4)	(5)	(6)
Empowerment index	0.11 (0.09)	0.13 (0.09)	0.07 (0.09)	0.05 (0.09)	0.12 (0.10)	0.17* (0.10)
Regional Empowerment index effect	0.43** (0.19)	0.44** (0.19)	0.48** (0.19)	0.47** (0.18)	0.36* (0.21)	0.33* (0.19)
GDP per capita (lagged)	0.69 (0.75)	0.51 (0.74)	1.22* (0.72)	1.18 (0.76)	0.33 (0.73)	-0.34 (0.80)
<b>Long-run effect of Empowerment index</b>	<b>0.76***</b> (2.42)	<b>0.66**</b> (1.86)	<b>0.62***</b> (2.92)	<b>0.49***</b> (1.98)	<b>0.67***</b> (4.89)	<b>0.71***</b> (4.70)
Regime type	0.03 (0.05)	0.00 (0.05)	0.06 (0.05)	0.06 (0.05)	0.05 (0.06)	0.02 (0.06)
Trade		0.01 (0.01)				
Investments		0.16*** (0.03)				
Rule of law				0.05 (0.81)		
Government effectiveness				0.96 (0.72)		
Control of corruption				0.56 (0.65)		
Human capital						0.74 (1.98)
Life expectancy						0.15* (0.09)
N	1723	1723	1846	1846	1591	1591
Countries	133	133	142	142	119	119
Time periods	16	16	16	16	16	16

**Note:** The dependent variable is GDP per capita growth. All models include 2 lags of GDP per capita growth and 15 lags of the empowerment index. GDP per capita in levels is included as lag 10 according to the number of lags of the empowerment index. Numbers inside ( ) are standard deviations except for long-run effects where numbers in ( ) are z-values. \*:  $P < 0:1$ , \*\*:  $P < 0:05$ , \*\*\*:  $P < 0:01$ . N is the total number of observations.

**TABLE A.3.8: THE REGIONAL EFFECT IN SUB-SAHARAN AFRICA OF FREEDOM AND PARTICIPATION RIGHTS ON GDP PER CAPITA GROWTH ADDING COVARIATES IN FIXED SAMPLES (GMM ESTIMATES, 15 LAGS)**

	Panel B: System GMM estimates					
	(7)	(8)	(9)	(10)	(11)	(12)
Empowerment index	0.18 (0.14)	0.22 (0.14)	0.15 (0.13)	0.13 (0.14)	0.11 (0.16)	0.15 (0.15)
Regional Empowerment index effect	0.44 (0.29)	0.39 (0.28)	0.50* (0.28)	0.45* (0.26)	0.23 (0.32)	0.24 (0.35)
GDP per capita (lagged)	-1.12 (1.29)	-0.54 (1.33)	-0.61 (1.37)	-1.01 (1.24)	-2.90** (1.32)	-3.56** (1.54)
<b>Long-run effect of Empowerment index</b>	<b>0.79</b> (0.63)	<b>0.97</b> (0.89)	<b>1.11</b> (2.85)	<b>1.01</b> (2.16)	<b>0.62</b> (0.62)	<b>0.48</b> (0.47)
Regime type	-0.02 (0.11)	-0.14 (0.13)	0.04 (0.12)	0.03 (0.11)	0.05 (0.14)	-0.05 (0.12)
Trade		0.03** (0.02)				
Investments		0.17** (0.07)				
Rule of law				1.85 (1.59)		
Government effectiveness				-0.67 (1.56)		
Control of corruption				0.54 (1.31)		
Human capital						0.76 (2.86)
Life expectancy						0.20 (0.16)
N	1723	1723	1846	1846	1591	1591
Countries	133	133	142	142	119	119
Time periods	16	16	16	16	16	16
AR2-test	-0.31	-0.88	-0.70	-0.71	-0.18	-0.21
Instruments	171	173	171	174	173	173
Sargan test	112.33	112.52	119.01	122.98	98.46	98.86

**Note:** The dependent variable is GDP per capita growth. All models include 2 lags of GDP per capita growth and 15 lags of the empowerment index. GDP per capita in levels is included as lag 10 according to the number of lags of the empowerment index. Numbers inside ( ) are standard deviations except for long-run effects where numbers in ( ) are z-values. \*:  $P < 0.1$ , \*\*:  $P < 0.05$ , \*\*\*:  $P < 0.01$ . N is the total number of observations. The AR2-test denotes the test statistics of serial uncorrelated residuals of second order and the Sargan test denotes the test statistics for the test of over-identified restrictions.

**TABLE A.3.9: THE REGIONAL EFFECT IN EUROPE AND CENTRAL ASIA OF FREEDOM AND PARTICIPATION RIGHTS ON GDP PER CAPITA GROWTH ADDING COVARIATES IN FIXED SAMPLES (WITHIN ESTIMATES, 10 LAGS)**

	Panel A: Within estimates					
	(1)	(2)	(5)	(6)	(7)	(8)
Empowerment index	-0.05 (0.12)	-0.04 (0.11)	0.18* (0.09)	0.17* (0.09)	0.08 (0.08)	0.14* (0.08)
Regional Empowerment index effect	0.19 (0.21)	0.28 (0.20)	0.19 (0.20)	0.18 (0.20)	-0.14 (0.22)	-0.14 (0.22)
GDP per capita (lagged)	-1.34** (0.62)	-2.43*** (0.90)	-0.86 (0.90)	-0.82 (0.89)	-1.57** (0.67)	-2.96*** (0.80)
<b>Long-run effect of Empowerment index</b>	<b>0.76***</b> (2.69)	<b>0.68***</b> (2.20)	<b>1.24***</b> (3.33)	<b>1.18***</b> (3.24)	<b>1.44***</b> (4.25)	<b>1.51***</b> (4.89)
Regime type	0.10 (0.07)	0.16 (0.10)	0.06 (0.05)	0.07 (0.05)	0.09** (0.04)	0.03 (0.04)
Trade		0.03*** (0.01)				
TFP		6.27*** (2.29)				
Investments		0.24*** (0.04)				
Unemployment		-0.09 (0.07)				
Rule of law				-0.69 (0.75)		
Government effectiveness				1.17* (0.63)		
Control of corruption				0.66 (0.65)		
Human capital						2.38* (1.29)
Life expectancy						0.12** (0.06)
N	1392	1392	2032	2032	2193	2193
Countries	97	97	145	145	121	121
Time periods	21	21	16	16	21	21

**Note:** The dependent variable is GDP per capita growth. All models include 2 lags of GDP per capita growth and 10 lags of the empowerment index. GDP per capita in levels is included as lag 10 according to the number of lags of the empowerment index. Numbers inside ( ) are standard deviations except for long-run effects where numbers in ( ) are z-values. \*:  $P < 0:1$ , \*\*:  $P < 0:05$ , \*\*\*:  $P < 0:01$ . N is the total number of observations.

**TABLE A.3.10: THE REGIONAL EFFECT IN EUROPE AND CENTRAL ASIA OF FREEDOM AND PARTICIPATION RIGHTS ON GDP PER CAPITA GROWTH ADDING COVARIATES IN FIXED SAMPLES (GMM ESTIMATES, 10 LAGS)**

	Panel B: System GMM estimates					
	(1)	(2)	(5)	(6)	(7)	(8)
Empowerment index	0.15 (0.21)	0.33 (0.17)	0.51*** (0.14)	0.43*** (0.13)	0.39*** (0.15)	0.36*** (0.14)
Regional Empowerment index effect	0.16 (0.48)	0.14 (0.51)	-0.05 (0.30)	-0.01 (0.23)	-0.06 (0.39)	0.13 (0.36)
GDP per capita (lagged)	-3.32*** (0.94)	-2.32* (1.21)	-1.10* (0.58)	-1.49* (0.77)	-2.18** (1.07)	-3.00* (1.80)
<b>Long-run effect of Empowerment index</b>	<b>0.73</b> (1.17)	<b>0.95</b> (1.36)	<b>1.02***</b> (2.83)	<b>1.33</b> (1.42)	<b>1.33</b> (1.42)	<b>1.36</b> (1.32)
Regime type	0.07 (0.19)	-0.06 (0.27)	0.02 (0.11)	-0.01 (0.13)	-0.07 (0.13)	-0.10 (0.13)
Trade		0.01 (0.02)				
TFP		32.26*** (5.51)				
Investments		0.34*** (0.06)				
Unemployment		-0.03 (0.13)				
Rule of law				0.41 (1.12)		
Government effectiveness				-0.07 (1.12)		
Control of corruption				1.28 (0.98)		
Human capital						3.12 (2.53)
Life expectancy						0.03 (0.17)
N	1392	1392	2032	2032	2193	2193
Countries	97	97	145	145	121	121
Time periods	21	21	16	16	21	21
AR2-test	-0.50	0.28	-0.26	-0.63	-0.80	-1.03
Instruments	206	210	169	164	206	208
Sargan test	86.5	79.75	134.3	133.09	110.04	104.89

**Note:** The dependent variable is GDP per capita growth. All models include 2 lags of GDP per capita growth and 10 lags of the empowerment index. GDP per capita in levels is included as lag 10 according to the number of lags of the empowerment index. Numbers inside ( ) are standard deviations except for long-run effects where numbers in ( ) are z-values. \*:  $P < 0:1$ , \*\*:  $P < 0:05$ , \*\*\*:  $P < 0:01$ . N is the total number of observations. The AR2-test denotes the test statistics of serial uncorrelated residuals of second order and the Sargan test denotes the test statistics for the test of over-identified restrictions.



**TABLE A.3.11: THE REGIONAL EFFECT IN EUROPE AND CENTRAL ASIA OF FREEDOM AND PARTICIPATION RIGHTS ON GDP PER CAPITA GROWTH ADDING COVARIATES IN FIXED SAMPLES (WITHIN ESTIMATES, 15 LAGS)**

	Panel A: Within estimates					
	(1)	(2)	(5)	(6)	(7)	(8)
Empowerment index	-0.03 (0.11)	-0.06 (0.11)	0.19* (0.10)	0.17* (0.10)	0.17* (0.10)	0.21** (0.10)
Regional Empowerment index effect	0.68*** (0.24)	0.73*** (0.23)	0.46** (0.22)	0.45** (0.22)	0.56** (0.23)	0.56** (0.23)
GDP per capita (lagged)	0.13 (0.90)	-1.63 (1.23)	1.36* (0.71)	1.29* (0.75)	0.51 (0.75)	-0.17 (0.79)
<b>Long-run effect of Empowerment index</b>	<b>1.07***</b> (2.67)	<b>0.41</b> (1.12)	<b>1.14***</b> (2.92)	<b>1.01***</b> (1.98)	<b>1.06***</b> (3.29)	<b>1.16***</b> (3.65)
Regime type	0.14 (0.11)	0.24** (0.12)	0.07 (0.05)	0.08 (0.05)	0.05 (0.06)	0.02 (0.05)
Trade		0.02** (0.01)				
TFP		13.67*** (4.32)				
Investments		0.29*** (0.04)				
Unemployment		-0.05 (0.09)				
Rule of law				0.09 (0.81)		
Government effectiveness				0.99 (0.69)		
Control of corruption				0.64 (0.67)		
Human capital						0.72 (1.93)
Life expectancy						0.15 (0.09)
N	1040	1040	1846	1846	1591	1591
Countries	96	96	142	142	119	119
Time periods	16	16	16	16	16	16

**Note:** The dependent variable is GDP per capita growth. All models include 2 lags of GDP per capita growth and 15 lags of the empowerment index. GDP per capita in levels is included as lag 10 according to the number of lags of the empowerment index. Numbers inside ( ) are standard deviations except for long-run effects where numbers in ( ) are z-values. \*:  $P < 0:1$ , \*\*:  $P < 0:05$ , \*\*\*:  $P < 0:01$ . N is the total number of observations.

**TABLE A.3.12: THE REGIONAL EFFECT IN EUROPE AND CENTRAL ASIA OF FREEDOM AND PARTICIPATION RIGHTS ON GDP PER CAPITA GROWTH ADDING COVARIATES IN FIXED SAMPLES (GMM ESTIMATES, 15 LAGS)**

	Panel B: System GMM estimates					
	(1)	(2)	(5)	(6)	(7)	(8)
Empowerment index	0.20 (0.17)	0.28* (0.16)	0.32*** (0.12)	0.31*** (0.12)	0.22* (0.11)	0.23** (0.10)
Regional Empowerment index effect	0.14 (0.51)	0.33 (0.42)	0.19 (0.33)	0.27 (0.40)	0.51 (0.40)	0.50 (0.39)
GDP per capita (lagged)	-2.72*** (1.40)	-4.21** (1.71)	-0.39 (0.58)	-0.82 (1.11)	-1.36* (0.77)	-2.40** (1.08)
<b>Long-run effect of Empowerment index</b>	<b>1.11</b> (0.92)	<b>0.62</b> (0.67)	<b>0.32</b> (0.29)	<b>0.07</b> (0.05)	<b>0.30</b> (2.81)	<b>0.25</b> (2.67)
Regime type	0.02 (0.28)	-0.11 (0.41)	0.01 (0.12)	-0.01 (0.12)	0.06 (0.12)	-0.03 (0.11)
Trade		0.03 (0.02)				
TFP		43.65*** (9.66)				
Investments		0.31*** (0.08)				
Unemployment		-0.06 (0.13)				
Rule of law				1.43 (1.89)		
Government effectiveness				-0.59 (1.55)		
Control of corruption				0.75 (1.17)		
Human capital						1.02 (3.05)
Life expectancy						0.18 (0.18)
N	1040	1040	1846	1846	1591	1591
Countries	96	96	142	142	119	119
Time periods	16	16	16	16	16	16
AR2-test	-0.45	-1.44	-0.58	-0.71	-0.42	-0.14
Instruments	206	210	171	174	171	173
Sargan test	76.48	66.14	115.83	115.62	95.55	95.03

**Note:** The dependent variable is GDP per capita growth. All models include 2 lags of GDP per capita growth and 15 lags of the empowerment index. GDP per capita in levels is included as lag 10 according to the number of lags of the empowerment index. Numbers inside ( ) are standard deviations except for long-run effects where numbers in ( ) are z-values. \*:  $P < 0.1$ , \*\*:  $P < 0.05$ , \*\*\*:  $P < 0.01$ . N is the total number of observations. The AR2-test denotes the test statistics of serial uncorrelated residuals of second order and the Sargan test denotes the test statistics for the test of over-identified restrictions.

**TABLE A.3.13: THE REGIONAL EFFECT IN OPEC OF FREEDOM AND PARTICIPATION RIGHTS ON GDP PER CAPITA GROWTH**

	Within estimates		System-GMM estimates	
	(1)	(2)	(3)	(4)
Short-run effect	0.30 (0.08)	0.23*** (0.08)	0.42*** (0.13)	0.31*** (0.11)
Regional Short-run effect	0.56 (0.44)	0.29 (0.58)	-0.78 (0.79)	0.25 (0.78)
GDP per capita (lagged)	-2.12*** (0.64)	0.78 (0.72)	-1.70*** (0.60)	-0.73 (0.53)
<b>Long-run effect of region</b>	<b>0.42</b> (1.25)	<b>0.72</b> (1.45)	<b>0.85</b> (1.23)	<b>1.55</b> (0.98)
Lags of empowerment index	10	15	10	15
Lags of GDP growth	2	4	2	4
N	2626	1890	2626	1890
Countries	148	145	148	145
Time periods	21	16	22	17
AR2-test			-1.12	-0.71
Instruments			165	170
Sargan test			135.3	128.1

**Note:** The dependent variable is GDP per capita growth. GDP per capita in levels is included as lag 10 or 15 according to the number of lags of the regressor. Number inside ( ) are standard deviations and \*:  $P < 0.1$ , \*\*:  $P < 0.05$ , \*\*\*:  $P < 0.01$ . N is the total number of observations. The AR2-test denotes the test statistics of serial uncorrelated residuals of second order and the Sagan test denotes the test statistics for the test of over-identified restrictions.

**TABLE A.3.14: THE REGIONAL EFFECT IN FORMER SOVIET COUNTRIES OF FREEDOM AND PARTICIPATION RIGHTS ON GDP PER CAPITA GROWTH**

	Within estimates		System-GMM estimates	
	(1)	(2)	(3)	(4)
Short-run effect	0.07 (0.08)	0.25*** (0.09)	0.38*** (0.12)	0.32*** (0.11)
Regional Short-run effect	0.02 (0.47)	-0.22 (1.08)	-0.31 (0.51)	-0.56 (1.94)
GDP per capita (lagged)	-2.29*** (0.65)	0.72 (0.71)	-1.40** (0.58)	-0.86 (0.54)
<b>Long-run effect of region</b>	<b>1.10</b> (1.37)	<b>0.19</b> (0.13)	<b>0.36</b> (0.20)	<b>1.44</b> (0.81)
Lags of empowerment index	10	15	10	15
Lags of GDP growth	2	4	2	4
N	2626	1890	2626	1890
Countries	148	145	148	145
Time periods	21	16	22	17
AR2-test			0.68	-1.13
Instruments			190	165
Sargan test			133.34	131.17

*Note:* The dependent variable is GDP per capita growth. GDP per capita in levels is included as lag 10 or 15 according to the number of lags of the regressor. Number inside ( ) are standard deviations and \*:  $P < 0.1$ , \*\*:  $P < 0.05$ , \*\*\*:  $P < 0.01$ . N is the total number of observations. The AR2-test denotes the test statistics of serial uncorrelated residuals of second order and the Sagan test denotes the test statistics for the test of over-identified restrictions.

**TABLE A.3.15: THE REGIONAL EFFECT IN SUB-SAHARAN AFRICA OF FREEDOM AND PARTICIPATION RIGHTS ON INVESTMENT**

	Within estimates		System-GMM estimates	
	10 lags	15 lags	10 lags	15 lags
Short-run effect	-0.16** (0.08)	-0.04 (0.07)	-0.26 (0.24)	-0.10 (0.20)
Regional Short-run effect	0.17 (0.14)	0.08 (0.19)	0.34 (0.38)	0.35 (0.48)
<b>Long-run effect of region</b>	<b>0.07</b> (0.16)	<b>0.74</b> (0.87)	<b>1.47</b> (0.55)	<b>1.90</b> (0.61)
Lags of GDP growth	2	4	2	4
N	2563	1867	2563	1867
Countries	142	137	142	137
Time periods	21	16	21	16
AR2-test			0.55	-0.38
Instruments			204	169
Sargan test			131.9	119.2

*Note:* The dependent variable is investment as percentage of GDP. Number inside ( ) are standard deviations except for long-run effects where numbers in ( ) are z-values. \*:  $P < 0.1$ , \*\*:  $P < 0.05$ , \*\*\*:  $P < 0.01$ . N is the total number of observations. The AR2-test denotes the test statistics of serial uncorrelated residuals of second order and the Sagan test denotes the test statistics for the test of over-identified restrictions.

**TABLE A.3.16: THE REGIONAL EFFECT IN SUB-SAHARAN AFRICA OF FREEDOM AND PARTICIPATION RIGHTS ON INVESTMENT ADDING REGIME TYPE AND GDP PER CAPITA**

	Within estimates		System-GMM estimates	
	10 lags	15 lags	10 lags	15 lags
Short-run effect	-0.20** (0.09)	-0.03 (0.08)	-0.29 (0.20)	-0.17 (0.28)
Regional Short-run effect	0.17 (0.15)	0.03 (0.19)	0.33 (0.35)	0.30 (0.41)
GDP per capita (lagged)	-0.95 (0.68)	0.16 (0.80)	-2.18 (1.59)	-1.04 (3.35)
<b>Long-run effect of region</b>	<b>-0.13</b> (-0.31)	<b>0.71</b> (0.85)	<b>1.07</b> (0.70)	<b>1.25</b> (0.34)
Regime type	0.10** (0.04)	0.09** (0.04)	0.13 (0.19)	0.16 (0.32)
Lags of GDP growth	2	4	2	4
N	2421	1746	2421	1746
Countries	137	132	137	132
Time periods	21	16	21	16
AR2-test			0.33	-0.41
Instruments			206	171
Sargan test			123.4	119.0

**Note:** The dependent variable is investment as percentage of GDP. GDP per capita in levels is included as lag 10 or 15 according to the number of lags of the regressor. Number inside ( ) are standard deviations except for long-run effects where numbers in ( ) are z-values. \*:  $P < 0:1$ , \*\*:  $P < 0:05$ , \*\*\*:  $P < 0:01$ . N is the total number of observations. The AR2-test denotes the test statistics of serial uncorrelated residuals of second order and the Sargan test denotes the test statistics for the test of over-identified restrictions.

**TABLE A.3.17: THE REGIONAL EFFECT IN SUB-SAHARAN AFRICA OF FREEDOM AND PARTICIPATION RIGHTS ON TRADE**

	Within estimates		System-GMM estimates	
	10 lags	15 lags	10 lags	15 lags
Short-run effect	-0.13 (0.19)	0.04 (0.27)	0.26 (0.32)	0.29 (0.64)
Regional Short-run effect	-0.2 (0.30)	-0.39 (0.42)	-0.06 (0.60)	0.03 (1.52)
<b>Long-run effect of region</b>	<b>-0.52</b> (-0.37)	<b>-1.68</b> (-0.62)	<b>5.19</b> (0.46)	<b>2.07</b> (0.11)
Lags of GDP growth	2	4	2	4
N	2661	1932	2661	1932
Countries	149	146	149	146
Time periods	21	16	21	16
AR2-test			-0.48	0.67
Instruments			204	169
Sargan test			132.8	125.7

**Note:** The dependent variable is trade as percentage of GDP. Number inside ( ) are standard deviations except for long-run effects where numbers in ( ) are z-values. \*:  $P < 0:1$ , \*\*:  $P < 0:05$ , \*\*\*:  $P < 0:01$ . N is the total number of observations. The AR2-test denotes the test statistics of serial uncorrelated residuals of second order and the Sagan test denotes the test statistics for the test of over-identified restrictions.

**TABLE A.3.18: THE REGIONAL EFFECT IN SUB-SAHARAN AFRICA OF FREEDOM AND PARTICIPATION RIGHTS ON TRADE ADDING REGIME TYPE AND GDP PER CAPITA**

	Within estimates		System-GMM estimates	
	10 lags	15 lags	10 lags	15 lags
Short-run effect	-0.03 (0.20)	0.11 (0.29)	0.01 (0.50)	0.36 (1.34)
Regional Short-run effect	-0.22 (0.28)	-0.46 (0.42)	0.18 (1.11)	-0.07 (2.38)
GDP per capita (lagged)	4.78*** (1.73)	2.39 (2.17)	5.74 (5.39)	-1.6 (8.15)
<b>Long-run effect of region</b>	<b>-0.15</b> (-0.11)	<b>-1.57</b> (-0.61)	<b>1.98</b> (0.16)	<b>-1.54</b> (-0.04)
Regime type	0.05 (0.12)	0.06 (0.13)	0.37 (0.65)	-0.30 (0.70)
Lags of GDP growth	2	4	2	4
N	2517	1809	2517	1809
Countries	144	141	144	141
Time periods	21	16	21	16
AR2-test			-0.24	0.77
Instruments			206	171
Sargan test			131.9	123.9

**Note:** The dependent variable is trade as percentage of GDP. GDP per capita in levels is included as lag 10 or 15 according to the number of lags of the regressor. Number inside ( ) are standard deviations except for long-run effects where numbers in ( ) are z-values. \*:  $P < 0:1$ , \*\*:  $P < 0:05$ , \*\*\*:  $P < 0:01$ . N is the total number of observations. The AR2-test denotes the test statistics of serial uncorrelated residuals of second order and the Sargan test denotes the test statistics for the test of over-identified restrictions.

**TABLE A.3.19: THE REGIONAL EFFECT IN EUROPE AND CENTRAL ASIA OF FREEDOM AND PARTICIPATION RIGHTS ON INVESTMENT**

	Within estimates		System-GMM estimates	
	10 lags	15 lags	10 lags	15 lags
Short-run effect	-0.04 (0.07)	0.00 (0.09)	-0.08 (0.11)	-0.01 (0.30)
Regional Short-run effect	-0.16 (0.16)	0.00 (0.17)	-0.63** (0.25)	-0.26 (0.66)
<b>Long-run effect of region</b>	<b>2.28***</b> (3.36)	<b>2.29***</b> (3.47)	<b>-1.65</b> (-1.16)	<b>-1.31</b> (-0.50)
Lags of empowerment index				
Lags of GDP growth				
N	2563	1867	2563	1867
Countries	142	137	142	137
Time periods	21	16	21	16
AR2-test			0.91	-0.28
Instruments			144	169
Sargan test			127.0	118.2

**Note:** The dependent variable is investment as percentage of GDP.. Number inside ( ) are standard deviations except for long-run effects where numbers in ( ) are z-values. \*:  $P < 0:1$ , \*\*:  $P < 0:05$ , \*\*\*:  $P < 0:01$ . N is the total number of observations. The AR2-test denotes the test statistics of serial uncorrelated residuals of second order and the Sagan test denotes the test statistics for the test of over-identified restrictions.



**TABLE A.3.20: THE REGIONAL EFFECT IN EUROPE AND CENTRAL ASIA OF FREEDOM AND PARTICIPATION RIGHTS ON INVESTMENT ADDING REGIME TYPE AND GDP PER CAPITA**

	Within estimates		System-GMM estimates	
	10 lags	15 lags	10 lags	15 lags
Short-run effect	-0.09 (0.07)	-0.01 (0.09)	-0.12 (0.14)	-0.06 (0.43)
Regional Short-run effect	-0.18 (0.18)	0.02 (0.17)	-0.73** (0.35)	-0.42 (0.68)
GDP per capita (lagged)	-0.88 (0.67)	0.16 (0.78)	-1.72 (1.40)	-0.96 (3.23)
<b>Long-run effect of region</b>	<b>2.09***</b> (3.17)	<b>2.22***</b> (3.60)	<b>-1.34</b> (-0.92)	<b>-1.88</b> (-0.56)
Regime type	0.10** (0.04)	0.08** (0.04)	0.12 (0.14)	0.19 (0.27)
Lags of empowerment index				
Lags of GDP growth				
N	2421	1746	2421	1746
Countries	137	132	137	132
Time periods	21	16	21	16
AR2-test			0.48	-0.32
Instruments			146	171
Sargan test			124.3	116.5

**Note:** The dependent variable is investment as percentage of GDP. GDP per capita in levels is included as lag 10 or 15 according to the number of lags of the regressor. Number inside ( ) are standard deviations except for long-run effects where numbers in ( ) are z-values. \*:  $P < 0:1$ , \*\*:  $P < 0:05$ , \*\*\*:  $P < 0:01$ . N is the total number of observations. The AR2-test denotes the test statistics of serial uncorrelated residuals of second order and the Sagan test denotes the test statistics for the test of over-identified restrictions.

**TABLE A.3.21: THE REGIONAL EFFECT IN EUROPE AND CENTRAL ASIA OF FREEDOM AND PARTICIPATION RIGHTS ON TRADE**

	Within estimates		System-GMM estimates	
	10 lags	15 lags	10 lags	15 lags
Short-run effect	-0.25 (0.16)	-0.19 (0.22)	-0.15 (0.27)	-0.19 (0.66)
Regional Short-run effect	0.24 (0.38)	0.78* (0.42)	1.05 (0.67)	1.85 (1.19)
<b>Long-run effect of region</b>	<b>-2.59</b> (-1.15)	<b>-1.74</b> (-0.49)	<b>19.33*</b> (1.92)	<b>11.75</b> (0.49)
Lags of empowerment index				
Lags of GDP growth				
N	2661	1932	2661	1932
Countries	149	146	149	146
Time periods	21	16	21	16
AR2-test			-0.60	0.55
Instruments			144	169
Sargan test			128.0	121.7

**Note:** The dependent variable is trade as percentage of GDP. Number inside ( ) are standard deviations except for long-run effects where numbers in ( ) are z-values. \*:  $P < 0:1$ , \*\*:  $P < 0:05$ , \*\*\*:  $P < 0:01$ . N is the total number of observations. The AR2-test denotes the test statistics of serial uncorrelated residuals of second order and the Sagan test denotes the test statistics for the test of over-identified restrictions.

**TABLE A.3.22: THE REGIONAL EFFECT IN EUROPE AND CENTRAL ASIA OF FREEDOM AND PARTICIPATION RIGHTS ON TRADE ADDING REGIME TYPE AND GDP PER CAPITA**

	Within estimates		System-GMM estimates	
	10 lags	15 lags	10 lags	15 lags
Short-run effect	-0.18 (0.15)	-0.19 (0.23)	-0.31 (0.23)	-0.18 (0.47)
Regional Short-run effect	0.32 (0.42)	0.96** (0.44)	1.65*** (0.62)	2.39 (1.65)
GDP per capita (lagged)	4.70*** (1.74)	2.21 (2.17)	-1.39 (3.66)	-4.30 (4.17)
<b>Long-run effect of region</b>	<b>-1.18</b> (-0.52)	<b>0.11</b> (0.04)	<b>19.06**</b> (2.17)	<b>45.62</b> (1.17)
Regime type	0.04 (0.12)	0.08 (0.13)	0.38 (0.35)	-0.70 (0.48)
Lags of empowerment index				
Lags of GDP growth				
N	2517	1809	2517	1809
Countries	144	141	144	141
Time periods	21	16	21	16
AR2-test			-0.59	0.56
Instruments			146	171
Sargan test			124.8	115.2

**Note:** The dependent variable is trade as percentage of GDP. GDP per capita in levels is included as lag 10 or 15 according to the number of lags of the regressor. Number inside ( ) are standard deviations except for long-run effects where numbers in ( ) are z-values. \*:  $P < 0:1$ , \*\*:  $P < 0:05$ , \*\*\*:  $P < 0:01$ . N is the total number of observations. The AR2-test denotes the test statistics of serial uncorrelated residuals of second order and the Sargan test denotes the test statistics for the test of over-identified restrictions.

**TABLE A.3.23: THE REGIONAL EFFECT IN SUB-SAHARAN AFRICA OF FREEDOM AND PARTICIPATION RIGHTS ON GOVERNMENT EFFECTIVENESS**

	Within estimates		System-GMM estimates	
	10 lags	12 lags	10 lags	12 lags
Short-run effect	0.00 (0.00)	0.00 (0.00)	0.01*** (0.00)	0.01* (0.00)
Regional Short-run effect	0.00 (0.00)	0.00 (0.01)	0.00 (0.01)	0.01 (0.01)
<b>Long-run effect of region</b>	<b>0.06**</b> (2.31)	<b>0.05</b> (1.55)	<b>0.08**</b> (2.00)	<b>0.11**</b> (2.27)
Lags of GDP growth	2	4	2	4
N	1905	1608	1905	1608
Countries	150	147	150	147
Time periods	14	12	14	12
AR2-test			0.72	-0.17
Instruments			102	100
Sargan test			102.2	96.7

**Note:** The dependent variable is government effectiveness. Numbers inside ( ) are standard deviations except for long-run effects where numbers in ( ) are z-values. \*:  $P < 0:1$ , \*\*:  $P < 0:05$ , \*\*\*:  $P < 0:01$ . N is the total number of observations. The AR2-test denotes the test statistics of serial uncorrelated residuals of second order and the Sargan test denotes the test statistics for the test of over-identified restrictions. Note that we use 12 instead of 15 lags in these regressions, due to the shorter time-series of the WGI-variables.

**TABLE A.3.24: THE REGIONAL EFFECT IN SUB-SAHARAN AFRICA OF FREEDOM AND PARTICIPATION RIGHTS ON GOVERNMENT EFFECTIVENESS ADDING REGIME TYPE AND GDP PER CAPITA**

	Within estimates		System-GMM estimates	
	10 lags	12 lags	10 lags	12 lags
Short-run effect	0.00 (0.00)	0.00 (0.00)	0.01* (0.00)	0.00 (0.00)
Regional Short-run effect	0.00 (0.00)	0.00 (0.01)	0.00 (0.01)	0.01 (0.01)
GDP per capita (lagged)	0.02 (0.02)	0.02 (0.03)	0.09 (0.06)	0.07 (0.06)
<b>Long-run effect of region</b>	<b>0.06**</b> (2.32)	<b>0.05</b> (1.54)	<b>0.07**</b> (2.46)	<b>0.09**</b> (2.16)
Regime type	0.00 (0.00)	0.00 (0.00)	0.00 (0.00)	0.00 (0.00)
Lags of GDP growth	2	4	2	4
N	1813	1526	1813	1526
Countries	145	142	145	142
Time periods	14	12	14	12
AR2-test			0.73	-0.14
Instruments			104	102
Sargan test			99.1	90.1

**Note:** The dependent variable is government effectiveness. GDP per capita in levels is included as lag 10 or 12 according to the number of lags of the regressor. Numbers inside ( ) are standard deviations except for long-run effects where numbers in ( ) are z-values. \*:  $P < 0:1$ , \*\*:  $P < 0:05$ , \*\*\*:  $P < 0:01$ . N is the total number of observations. The AR2-test denotes the test statistics of serial uncorrelated residuals of second order and the Sagan test denotes the test statistics for the test of over-identified restrictions. Note that we use 12 instead of 15 lags in these regressions, due to the shorter time-series of the WGI-variables.

**TABLE A.3.25: THE REGIONAL EFFECT IN SUB-SAHARAN AFRICA OF FREEDOM AND PARTICIPATION RIGHTS ON CONTROL OF CORRUPTION**

	Within estimates		System-GMM estimates	
	10 lags	12 lags	10 lags	12 lags
Short-run effect	0.00 (0.00)	0.00 (0.00)	0.00 (0.01)	0.00 (0.01)
Regional Short-run effect	0.00 (0.01)	0.00 (0.01)	0.00 (0.01)	0.00 (0.01)
<b>Long-run effect of region</b>	<b>0.03</b> (1.41)	<b>0.03</b> (1.02)	<b>-0.10</b> (-1.18)	<b>-0.05</b> (-0.66)
Lags of GDP growth	2	4	2	4
N	1905	1608	1905	1608
Countries	150	147	150	147
Time periods	14	12	14	12
AR2-test			1.86	0.26
Instruments			102	100
Sargan test			105.4	91.4

**Note:** The dependent variable is control of corruption. Numbers inside ( ) are standard deviations except for long-run effects where numbers in ( ) are z-values. \*:  $P < 0:1$ , \*\*:  $P < 0:05$ , \*\*\*:  $P < 0:01$ . N is the total number of observations. The AR2-test denotes the test statistics of serial uncorrelated residuals of second order and the Sagan test denotes the test statistics for the test of over-identified restrictions. Note that we use 12 instead of 15 lags in these regressions, due to the shorter time-series of the WGI-variables.

**TABLE A.3.26: THE REGIONAL EFFECT IN SUB-SAHARAN AFRICA OF FREEDOM AND PARTICIPATION RIGHTS ON CONTROL OF CORRUPTION ADDING REGIME TYPE AND GDP PER CAPITA**

	Within estimates		System-GMM estimates	
	10 lags	12 lags	10 lags	12 lags
Short-run effect	0.00 (0.00)	0.00 (0.00)	0.00 (0.01)	0.01 (0.01)
Regional Short-run effect	0.00 (0.01)	0.00 (0.01)	-0.01 (0.01)	0.00 (0.01)
GDP per capita (lagged)	-0.06** (0.03)	-0.03 (0.04)	0.18*** (0.07)	0.11 (0.08)
<b>Long-run effect of region</b>	<b>0.03</b> (1.17)	<b>0.03</b> (0.90)	<b>-0.10</b> (-1.28)	<b>-0.05</b> (-0.58)
Regime type	0.00 (0.00)	0.00 (0.00)	-0.01* (0.01)	-0.02** (0.01)
Lags of GDP growth	2	4	2	4
N	1813	1526	1813	1526
Countries	145	142	145	142
Time periods	14	12	14	12
AR2-test			2.15	1.19
Instruments			104	102
Sargan test			108.2	90.8

**Note:** The dependent variable is control of corruption. GDP per capita in levels is included as lag 10 or 12 according to the number of lags of the regressor. Numbers inside ( ) are standard deviations except for long-run effects where numbers in ( ) are z-values. \*:  $P < 0:1$ , \*\*:  $P < 0:05$ , \*\*\*:  $P < 0:01$ . N is the total number of observations. The AR2-test denotes the test statistics of serial uncorrelated residuals of second order and the Sagan test denotes the test statistics for the test of over-identified restrictions. Note that we use 12 instead of 15 lags in these regressions, due to the shorter time-series of the WGI-variables.

**TABLE A.3.27: THE REGIONAL EFFECT IN EUROPE AND CENTRAL ASIA OF FREEDOM AND PARTICIPATION RIGHTS ON GOVERNMENT EFFECTIVENESS**

	Within estimates		System-GMM estimates	
	10 lags	12 lags	10 lags	12 lags
Short-run effect	0.00*	0.00	0.01*	0.01**
	(0.00)	(0.00)	(0.00)	(0.00)
Regional Short-run effect	0.00	0.00	0.00	-0.01
	(0.00)	(0.01)	(0.01)	(0.01)
<b>Long-run effect of region</b>	<b>0.05</b>	<b>0.05</b>	<b>0.09</b>	<b>0.00</b>
	(1.04)	(0.99)	(1.48)	(0.07)
Lags of GDP growth	2	4	2	4
N	1905	1608	1905	1608
Countries	150	147	150	147
Time periods	14	12	14	12
AR2-test			0.91	0.43
Instruments			87	100
Sargan test			96.0	102.6

**Note:** The dependent variable is government effectiveness. Numbers inside ( ) are standard deviations except for long-run effects where numbers in ( ) are z-values. \*:  $P < 0:1$ , \*\*:  $P < 0:05$ , \*\*\*:  $P < 0:01$ . N is the total number of observations. The AR2-test denotes the test statistics of serial uncorrelated residuals of second order and the Sargan test denotes the test statistics for the test of over-identified restrictions. Note that we use 12 instead of 15 lags in these regressions, due to the shorter time-series of the WGI-variables.



**TABLE A.3.28: THE REGIONAL EFFECT IN EUROPE AND CENTRAL ASIA OF FREEDOM AND PARTICIPATION RIGHTS ON GOVERNMENT EFFECTIVENESS ADDING REGIME TYPE AND GDP PER CAPITA**

	Within estimates		System-GMM estimates	
	10 lags	12 lags	10 lags	12 lags
Short-run effect	0.00*	0.00	0.01**	0.01**
	(0.00)	(0.00)	(0.00)	(0.00)
Regional Short-run effect	0.00	0.00	0.00	-0.01
	(0.00)	(0.01)	(0.01)	(0.01)
GDP per capita (lagged)	0.03	0.03	0.09	0.02
	(0.02)	(0.03)	(0.06)	(0.07)
<b>Long-run effect of region</b>	<b>0.03</b>	<b>0.04</b>	<b>0.04</b>	<b>-0.04</b>
	(0.67)	(0.71)	(0.78)	(-0.53)
Regime type	0.00	0.00	0.01	0.00
	(0.00)	(0.00)	(0.00)	(0.00)
Lags of GDP growth	2	4	2	4
N	1813	1526	1813	1526
Countries	145	142	145	142
Time periods	14	12	14	12
AR2-test			0.89	0.23
Instruments			89	102
Sargan test			98.8	97.2

**Note:** The dependent variable is government effectiveness. GDP per capita in levels is included as lag 10 or 12 according to the number of lags of the regressor. Numbers inside ( ) are standard deviations except for long-run effects where numbers in ( ) are z-values. \*:  $P < 0:1$ , \*\*:  $P < 0:05$ , \*\*\*:  $P < 0:01$ . N is the total number of observations. The AR2-test denotes the test statistics of serial uncorrelated residuals of second order and the Sagan test denotes the test statistics for the test of over-identified restrictions. Note that we use 12 instead of 15 lags in these regressions, due to the shorter time-series of the WGI-variables.

**TABLE A.3.29: THE REGIONAL EFFECT IN EUROPE AND CENTRAL ASIA OF FREEDOM AND PARTICIPATION RIGHTS ON CONTROL OF CORRUPTION**

	Within estimates		System-GMM estimates	
	10 lags	12 lags	10 lags	12 lags
Short-run effect	0.00 (0.00)	0.00 (0.00)	0.00 (0.01)	0.00 (0.01)
Regional Short-run effect	0.00 (0.01)	0.00 (0.01)	0.02** (0.01)	0.01 (0.01)
<b>Long-run effect of region</b>	<b>0.01</b> (0.38)	<b>0.01</b> (0.34)	<b>0.15**</b> (2.01)	<b>0.11</b> (1.47)
Lags of GDP growth	2	4	2	4
N	1905	1608	1905	1608
Countries	150	147	150	147
Time periods	14	12	14	12
AR2-test			1.80	0.40
Instruments			87	100
Sargan test			99.0	94.9

**Note:** The dependent variable is control of corruption. Numbers inside ( ) are standard deviations except for long-run effects where numbers in ( ) are z-values. \*:  $P < 0:1$ , \*\*:  $P < 0:05$ , \*\*\*:  $P < 0:01$ . N is the total number of observations. The AR2-test denotes the test statistics of serial uncorrelated residuals of second order and the Sagan test denotes the test statistics for the test of over-identified restrictions. Note that we use 12 instead of 15 lags in these regressions, due to the shorter time-series of the WGI-variables.

**TABLE A.3.30: THE REGIONAL EFFECT IN EUROPE AND CENTRAL ASIA OF FREEDOM AND PARTICIPATION RIGHTS ON CONTROL OF CORRUPTION ADDING REGIME TYPE AND GDP PER CAPITA**

	Within estimates		System-GMM estimates	
	10 lags	12 lags	10 lags	12 lags
Short-run effect	0.00 (0.00)	0.00 (0.00)	0.00 (0.01)	0.00 (0.01)
Regional Short-run effect	0.00 (0.01)	0.00 (0.01)	0.02 (0.01)	0.01 (0.01)
GDP per capita (lagged)	-0.05* (0.03)	-0.03 (0.04)	0.16** (0.07)	0.11 (0.08)
<b>Long-run effect of region</b>	<b>-0.01</b> (-0.35)	<b>0.00</b> (-0.04)	<b>0.10</b> (1.60)	<b>0.09</b> (1.33)
Regime type	0.00 (0.00)	0.00 (0.00)	-0.01 (0.01)	-0.01 (0.01)
Lags of GDP growth	2	4	2	4
N	1813	1526	1813	1526
Countries	145	142	145	142
Time periods	14	12	14	12
AR2-test			2.23	1.22
Instruments			89	102
Sargan test			103.5	95.4

**Note:** The dependent variable is control of corruption. GDP per capita in levels is included as lag 10 or 12 according to the number of lags of the regressor. Numbers inside ( ) are standard deviations except for long-run effects where numbers in ( ) are z-values. \*:  $P < 0:1$ , \*\*:  $P < 0:05$ , \*\*\*:  $P < 0:01$ . N is the total number of observations. The AR2-test denotes the test statistics of serial uncorrelated residuals of second order and the Sagan test denotes the test statistics for the test of over-identified restrictions. Note that we use 12 instead of 15 lags in these regressions, due to the shorter time-series of the WGI-variables.