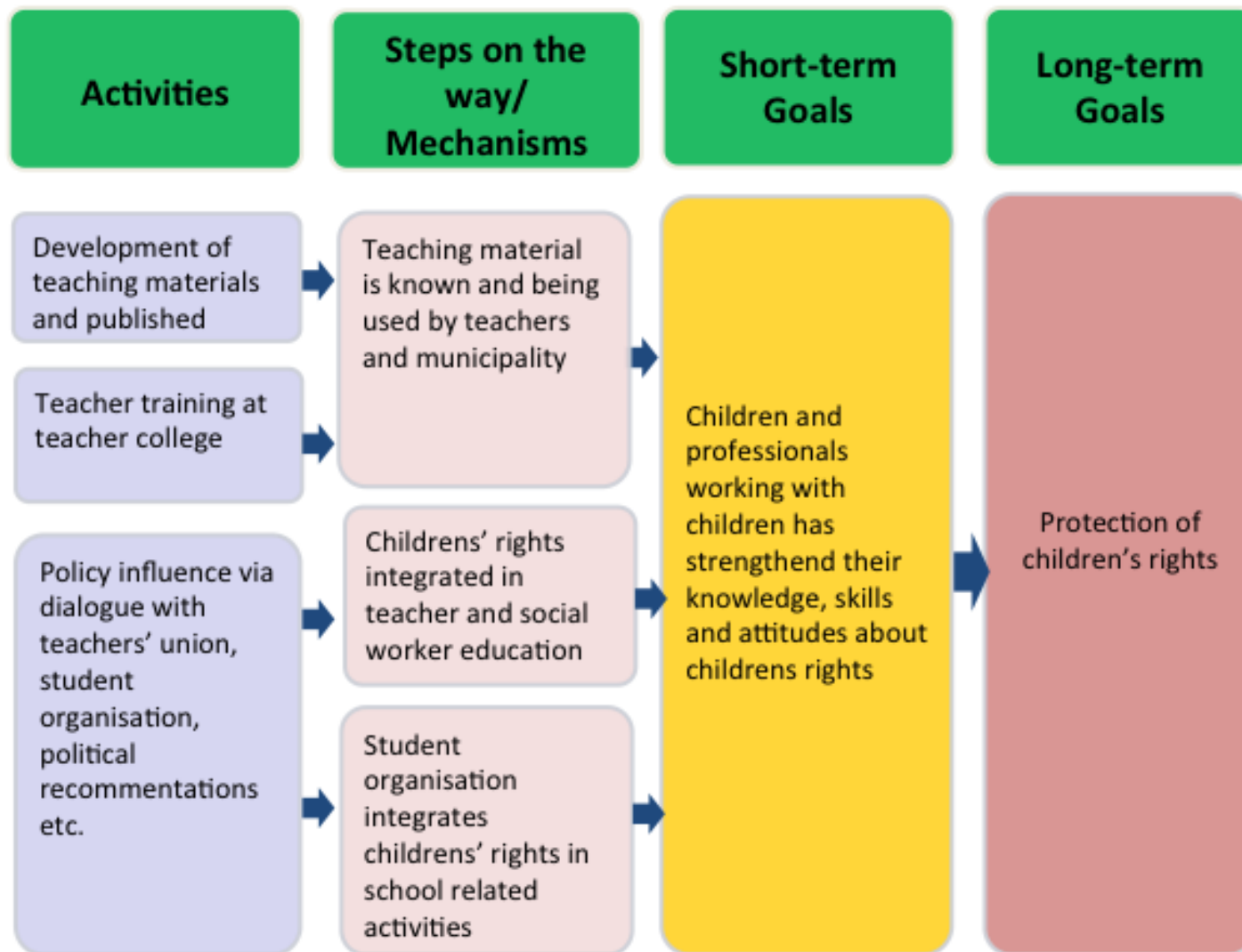


From Best Practice to Model

Short description of best practice case:
(Target group, time frame, resources etc.)



Measurable Results:

What were the measurable results of the case? (*Who, what, how many, where...*)

Min 50% of schools use the teaching materials

Min 300 teachers complete training

Evaluation and Indicators:

How did you evaluate and measure the results?

Questionnaires + interviews (teachers, schools and municipality)

Context:

Important conditions, barriers etc.